

Coastal Bend Region Profile for 2004

Philip W. Rhoades, Ph.D.

Valerie Villarreal, B.A.

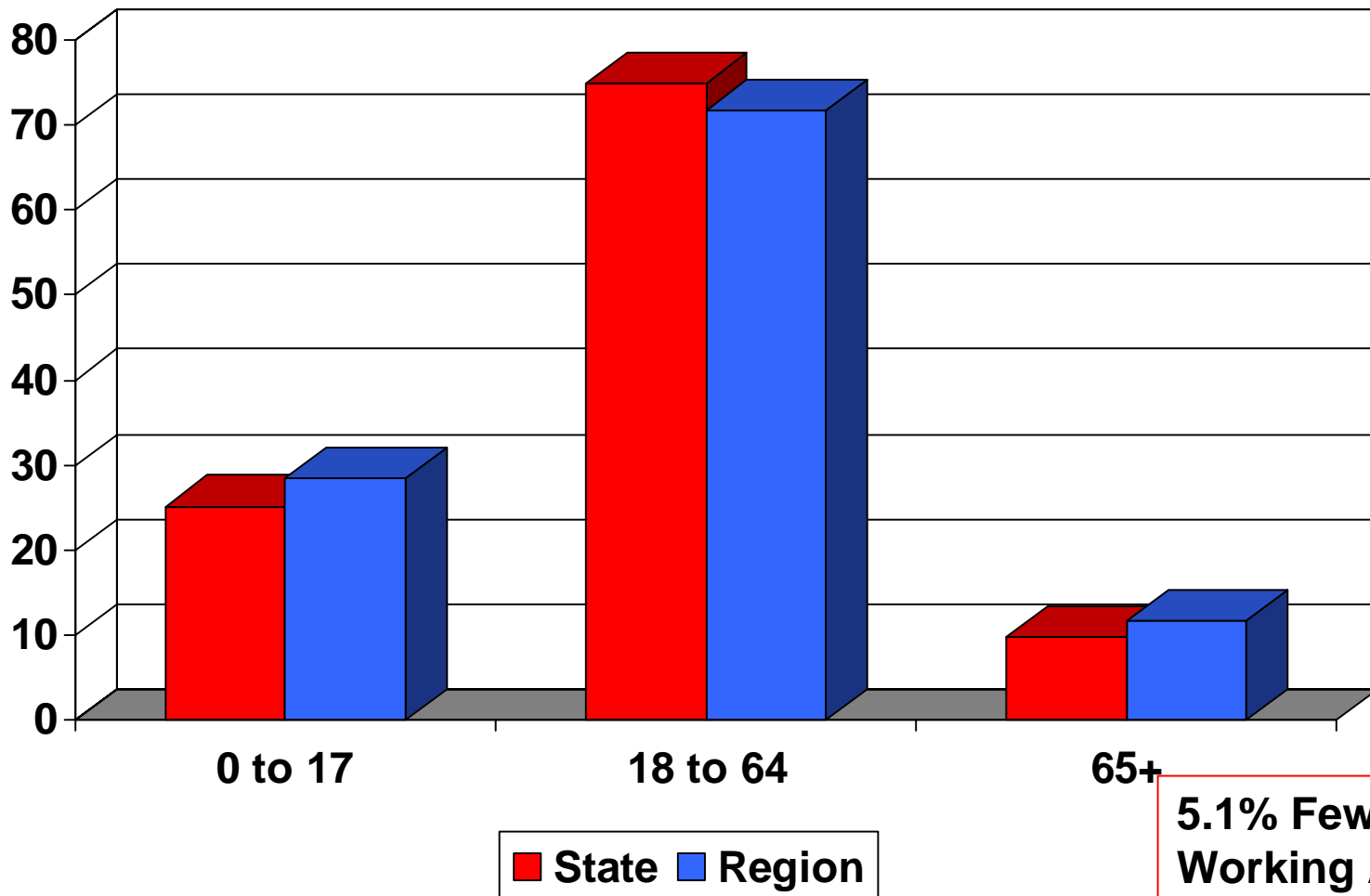
Stephanie Jackson B.A.

Swathi Yarlagadda B.S.



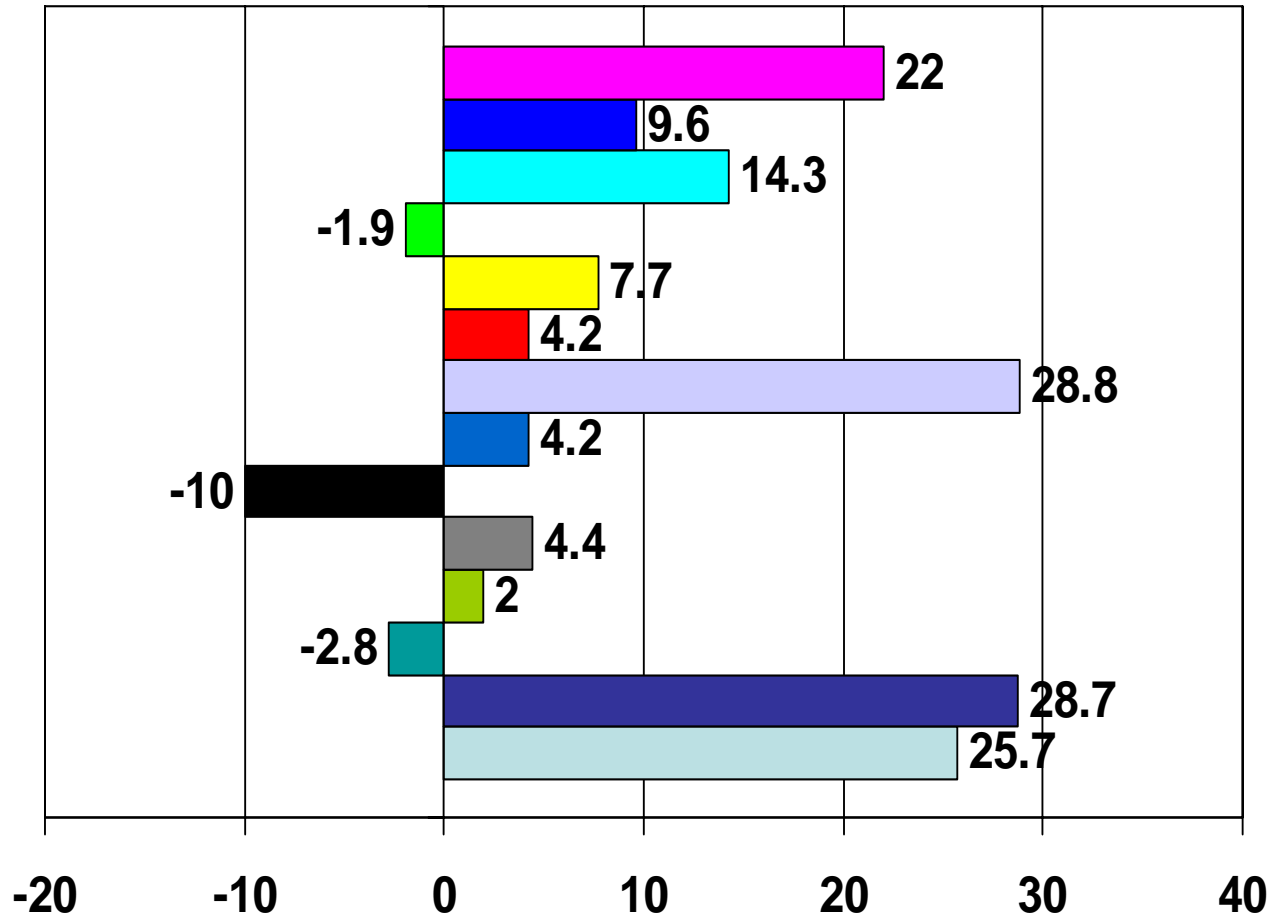
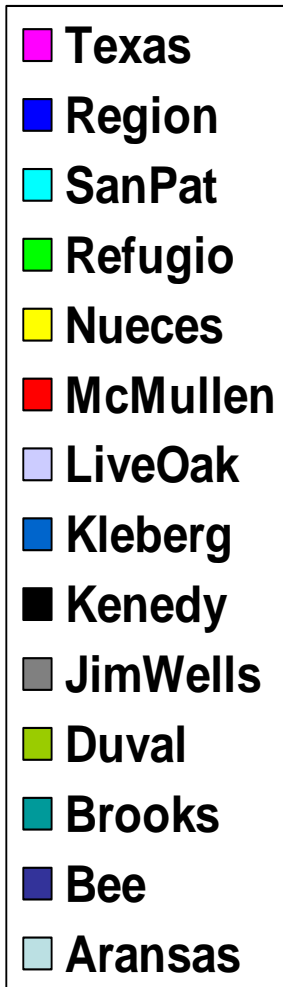
Texas A&M University-Corpus Christi
The Island University

Coastal Bend and State Population % Distribution by Age Groups 2000



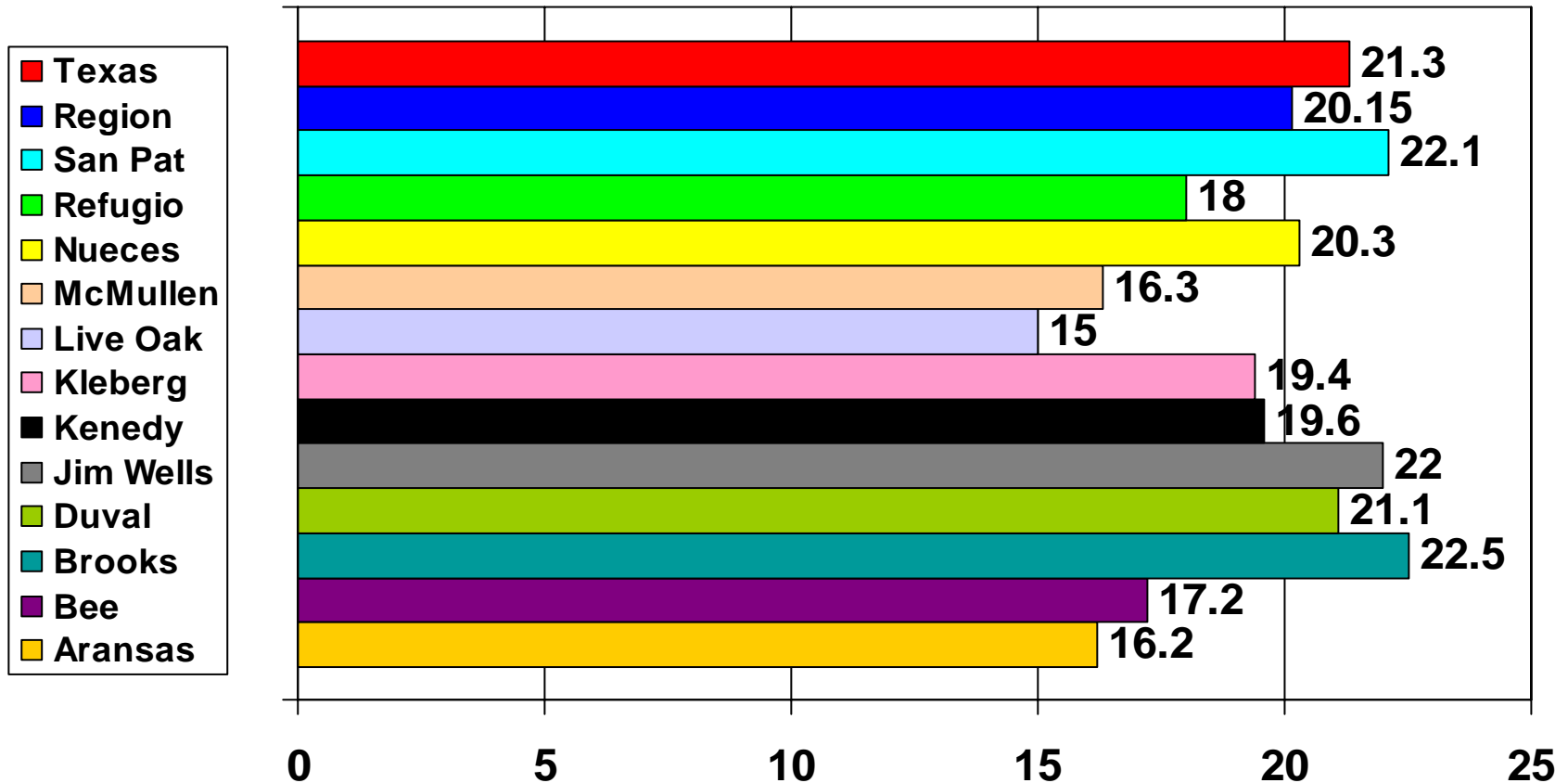
Source: US Census

Population Percentage Change from 1990 to 2000



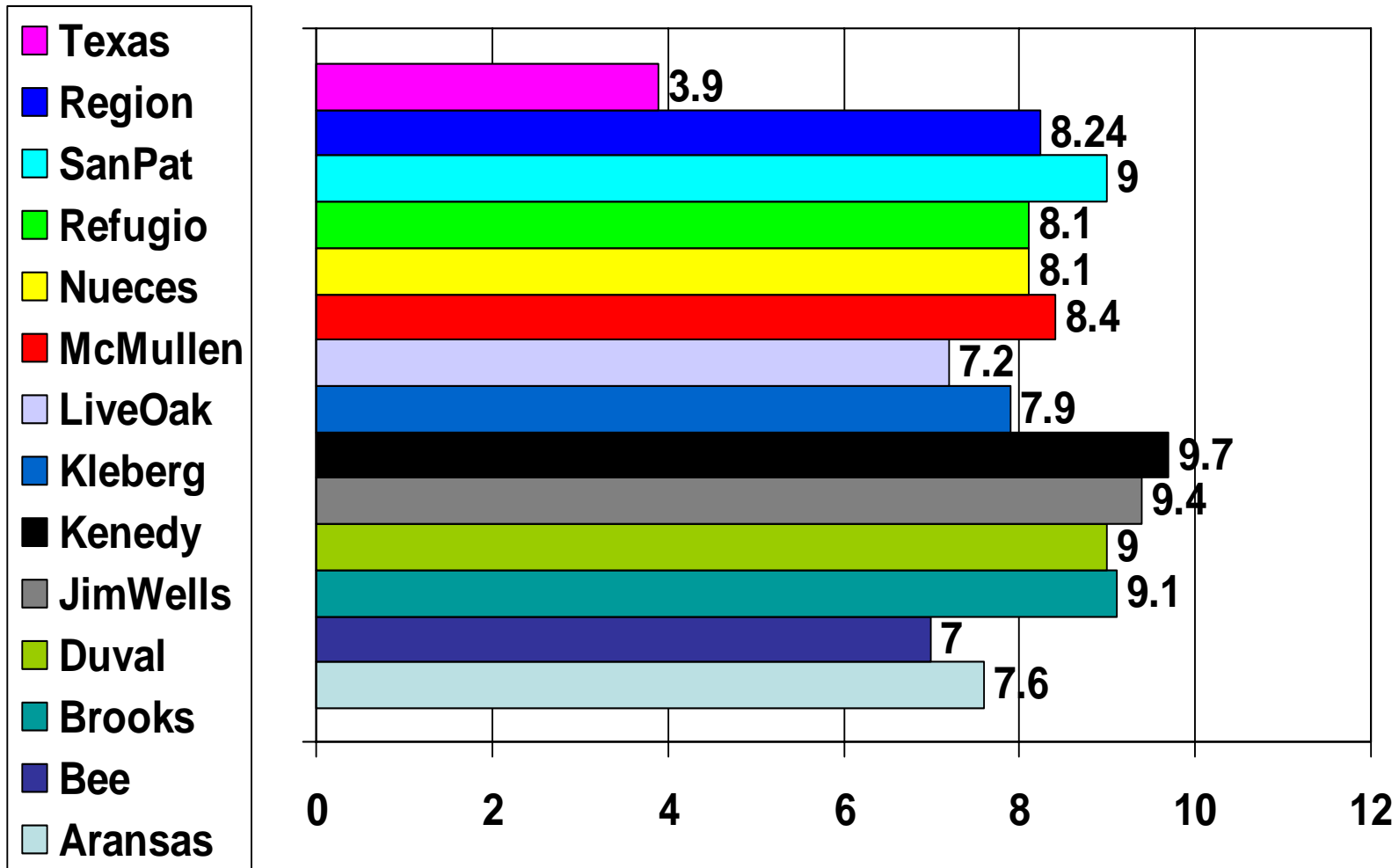
Source: U.S. Census

Proportion of Population 12 and Under 2000



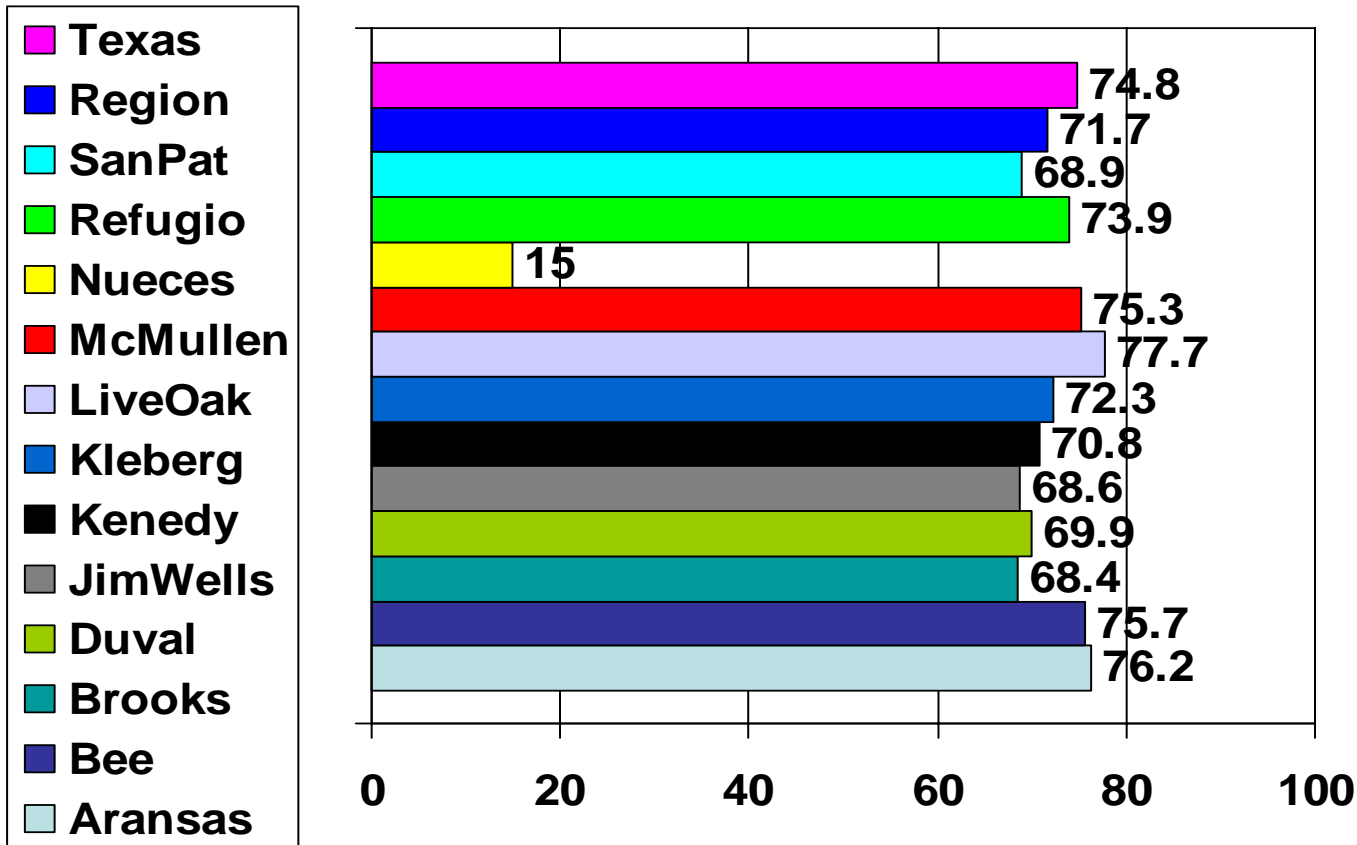
Source: U.S. Census

Proportion of Population Youth age 13 – 17 years 2000



Source: U.S. Census

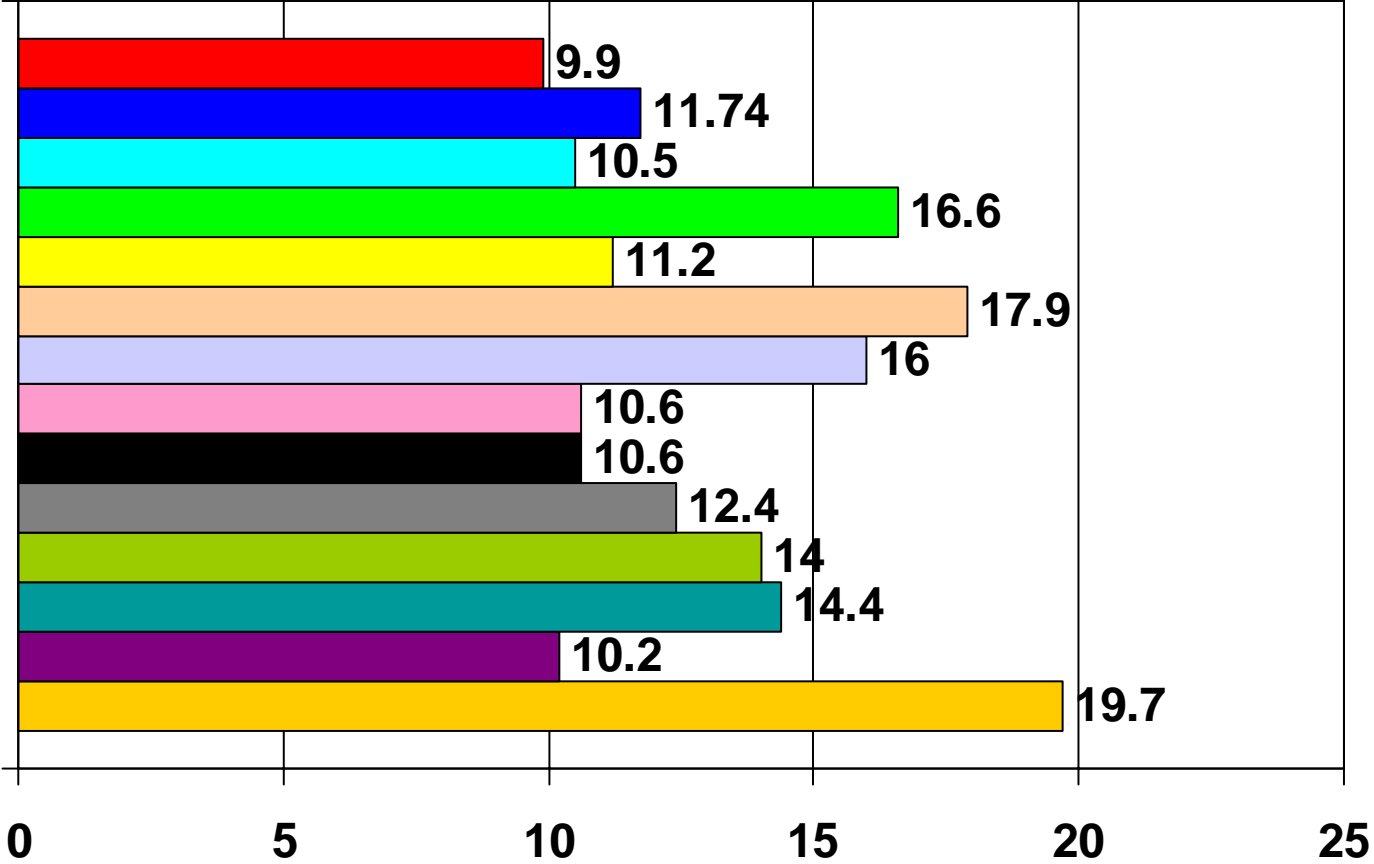
Proportion of Population Adults 18 & Older 2000



Source: U.S. Census

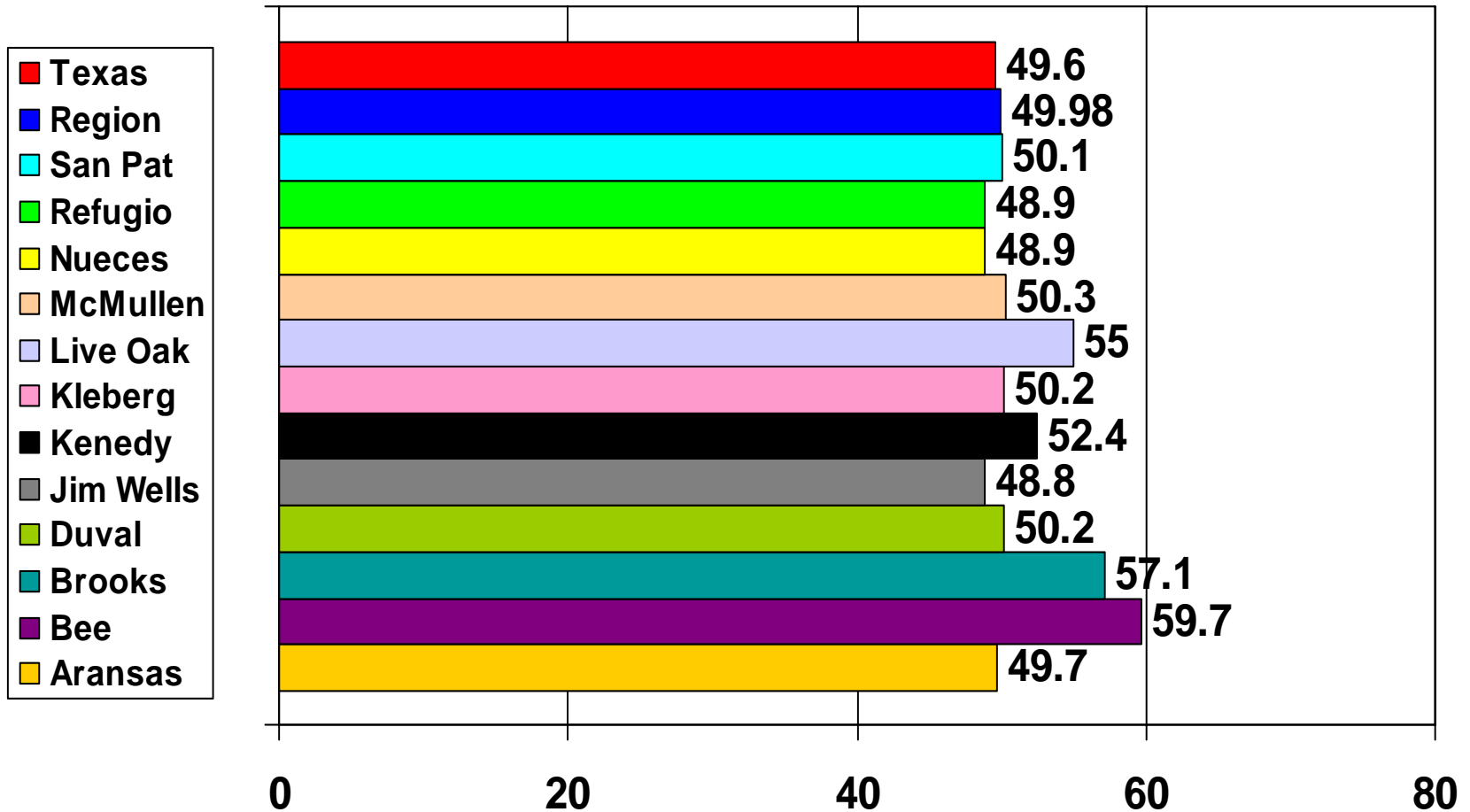
Proportion of Population 65 Years of Age or Older 2000

- Texas
- Region
- San Pat
- Refugio
- Nueces
- McMullen
- Live Oak
- Kleberg
- Kenedy
- Jim Wells
- Duval
- Brooks
- Bee
- Aransas



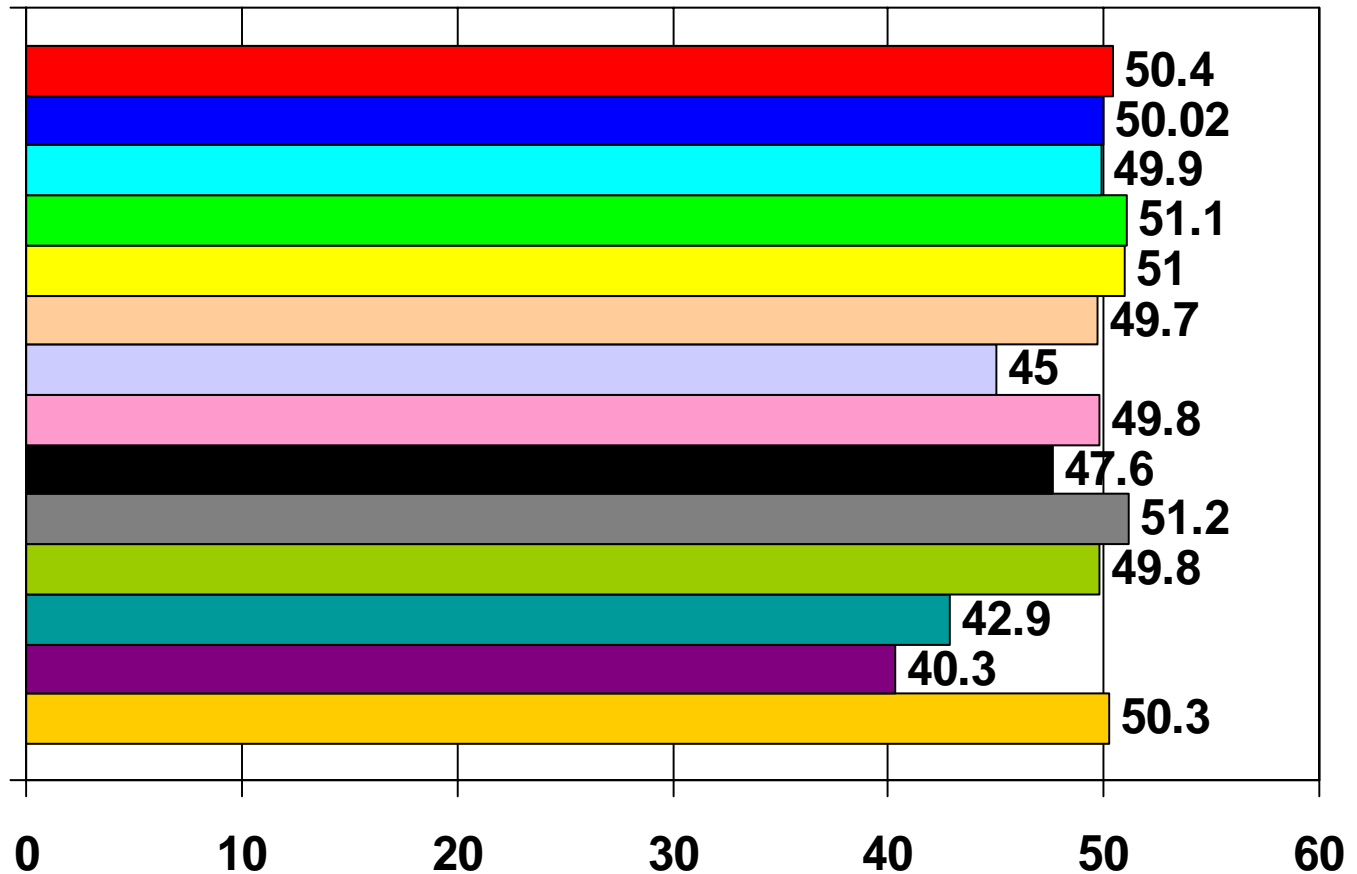
Source: U.S. Census

Rate - Males 2000



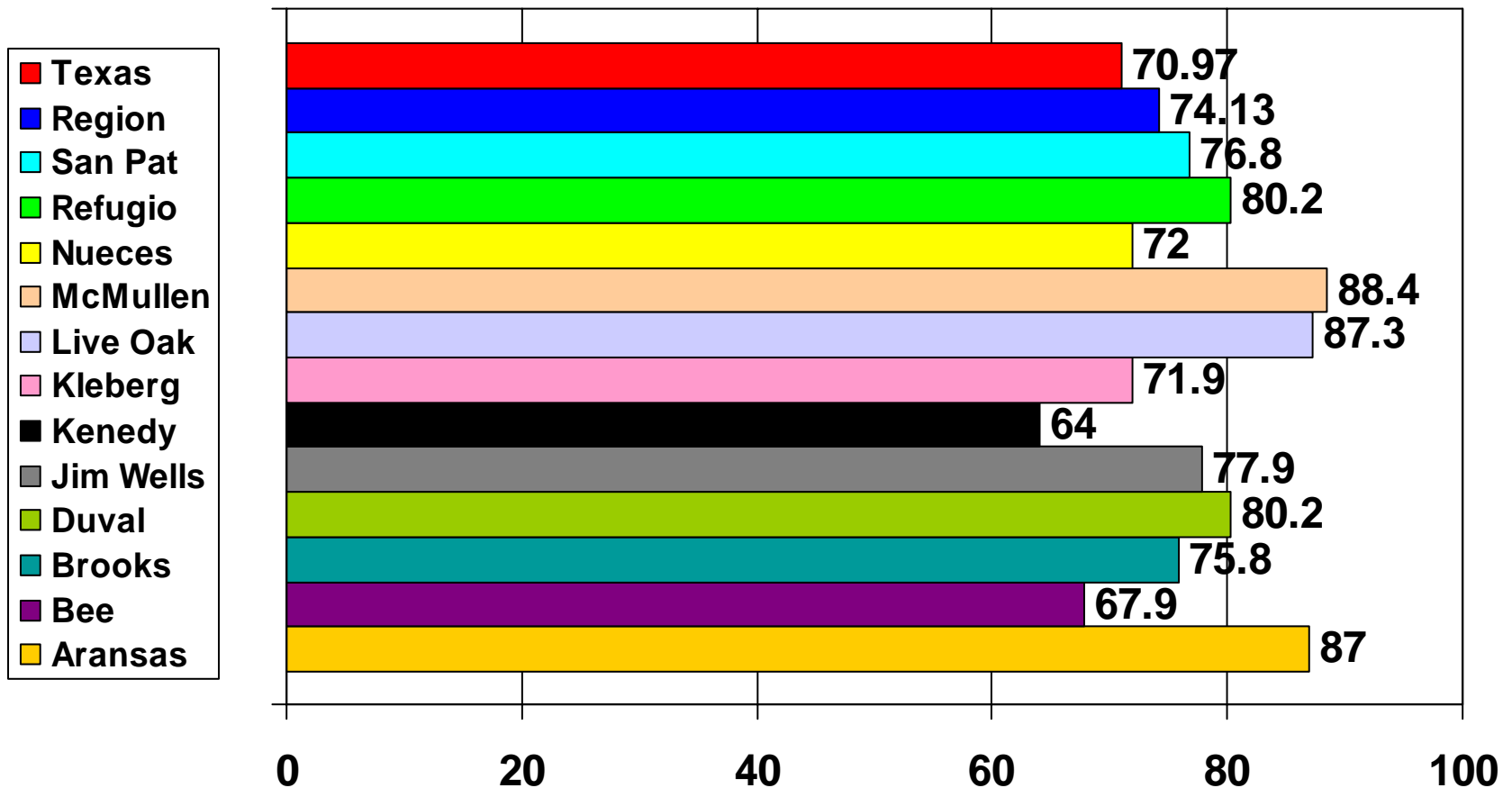
Source: U.S. Census

Rate - Female 2000



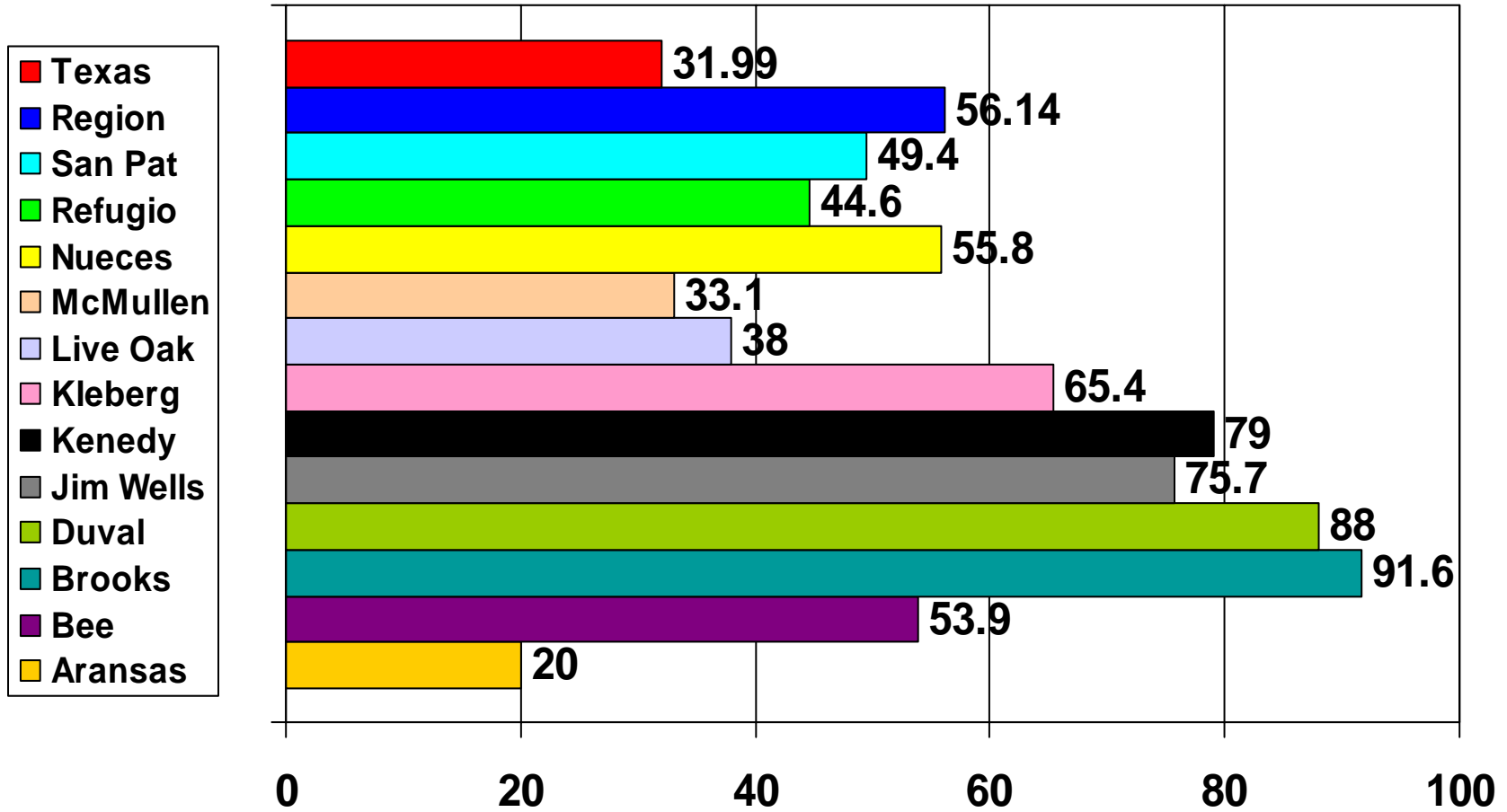
Source: U.S. Census

Rate – White including Hispanics 2000



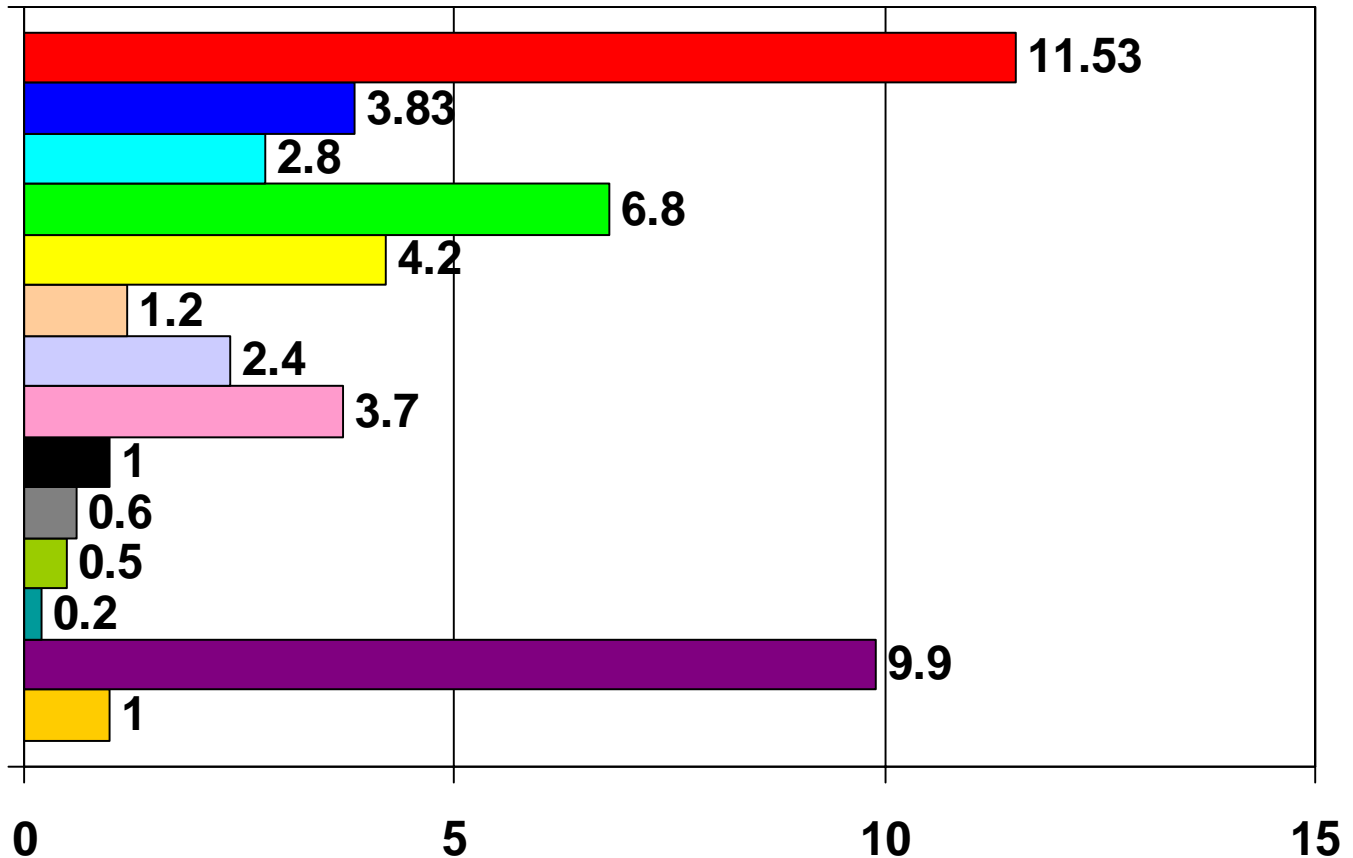
Source: U.S. Census

Rate – Hispanics 2000



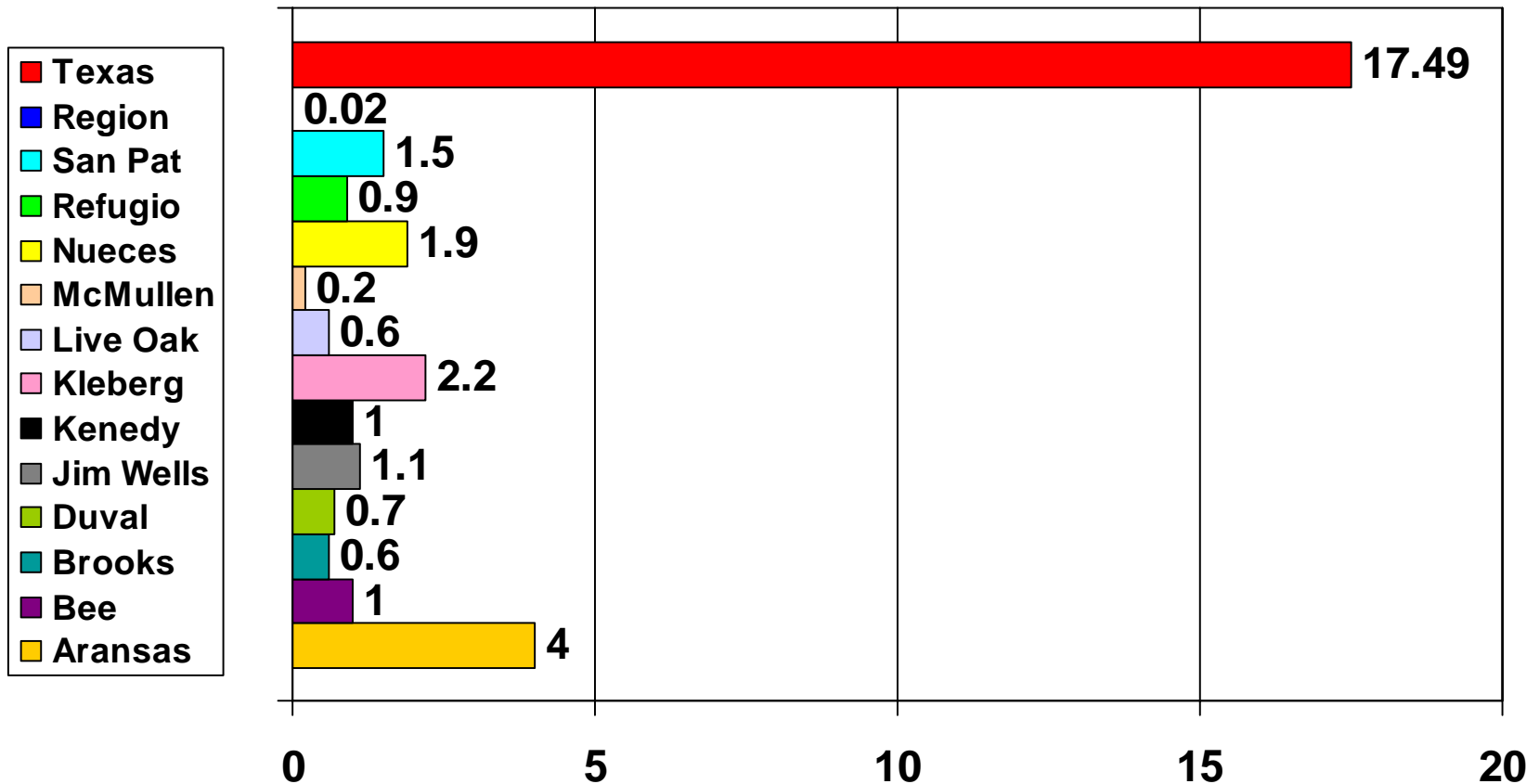
Source: U.S. Census

Rate – African American 2000



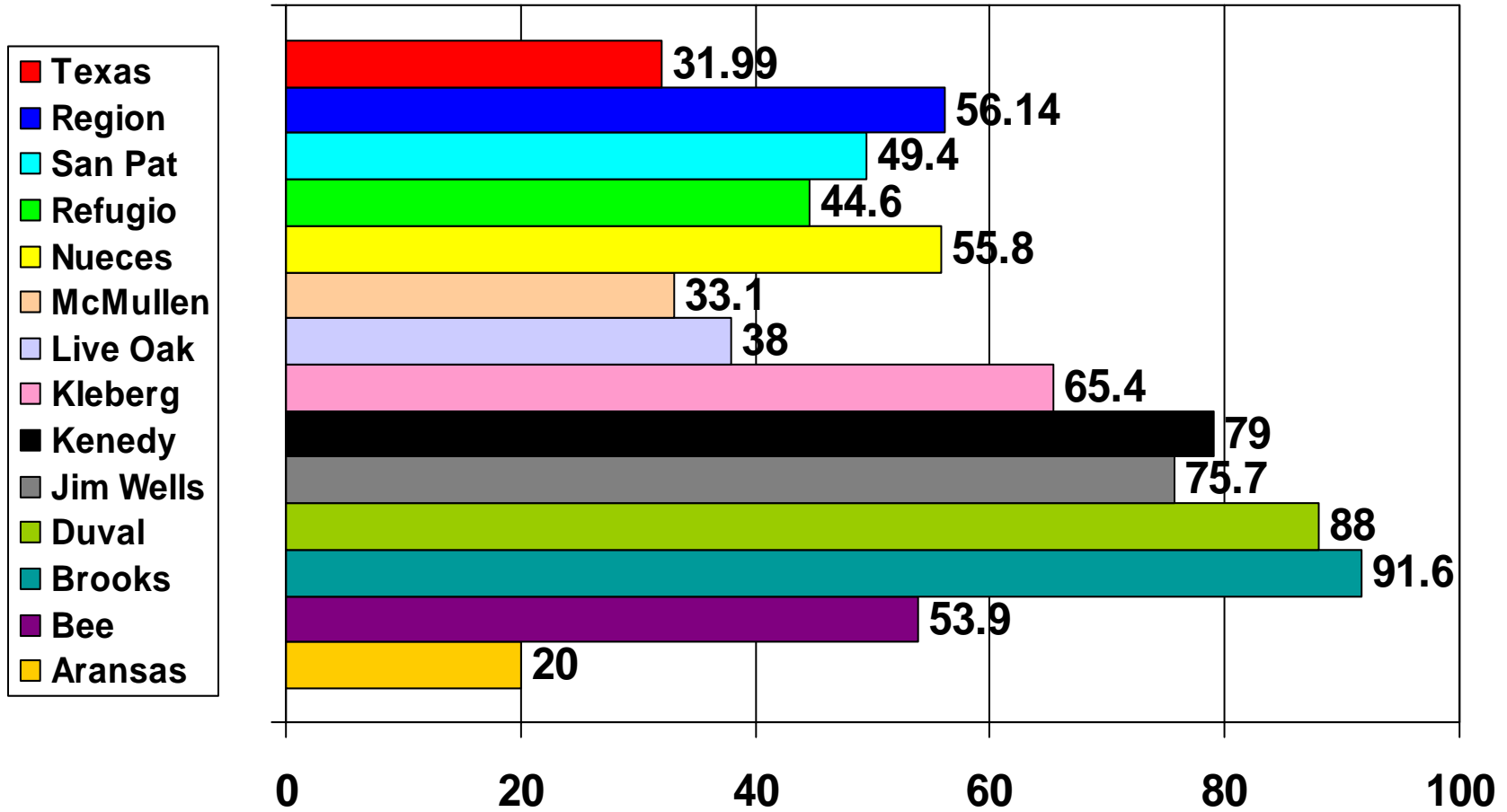
Source: U.S. Census

Rate – Other 2000



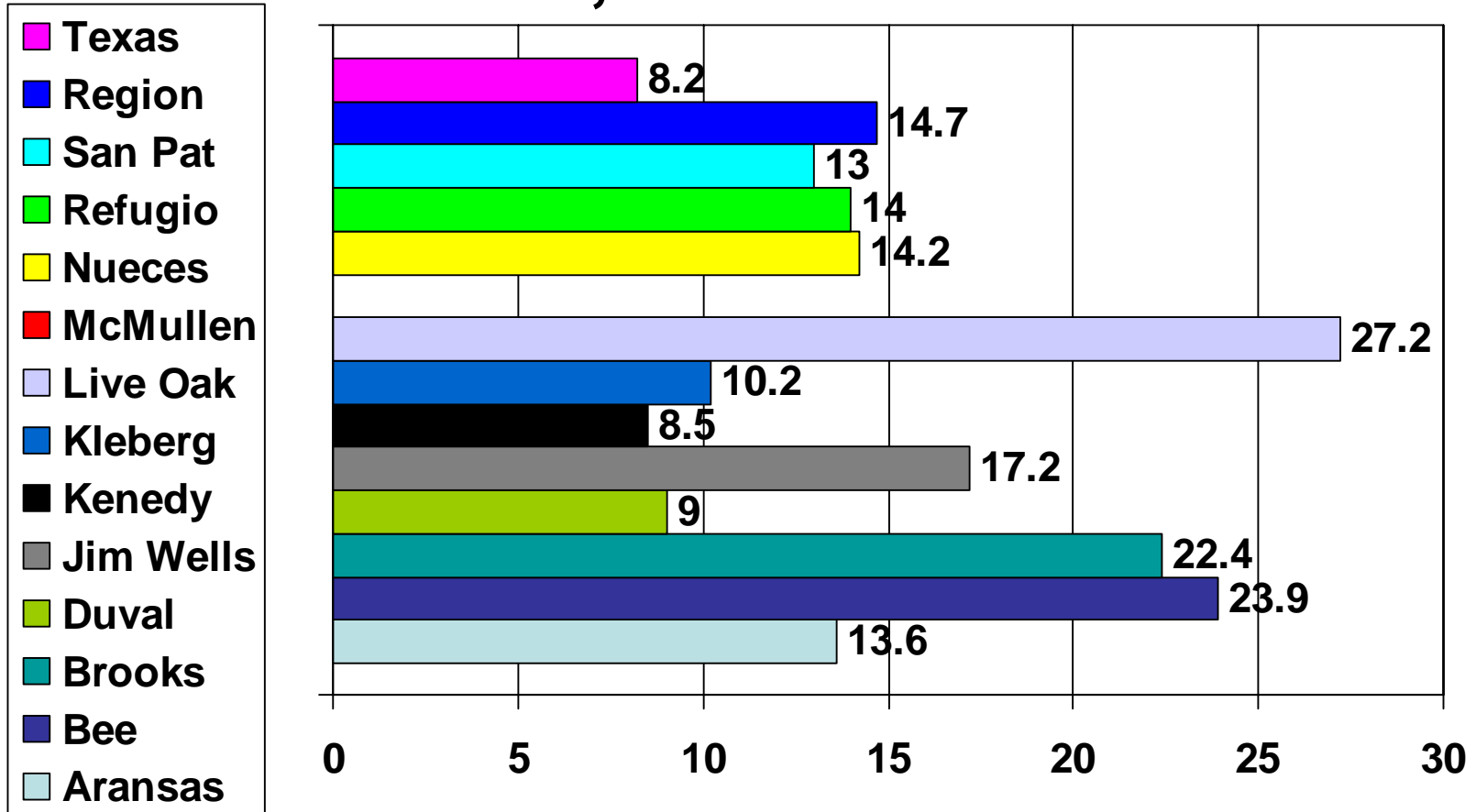
Source: U.S. Census

Rate – Hispanics 2000



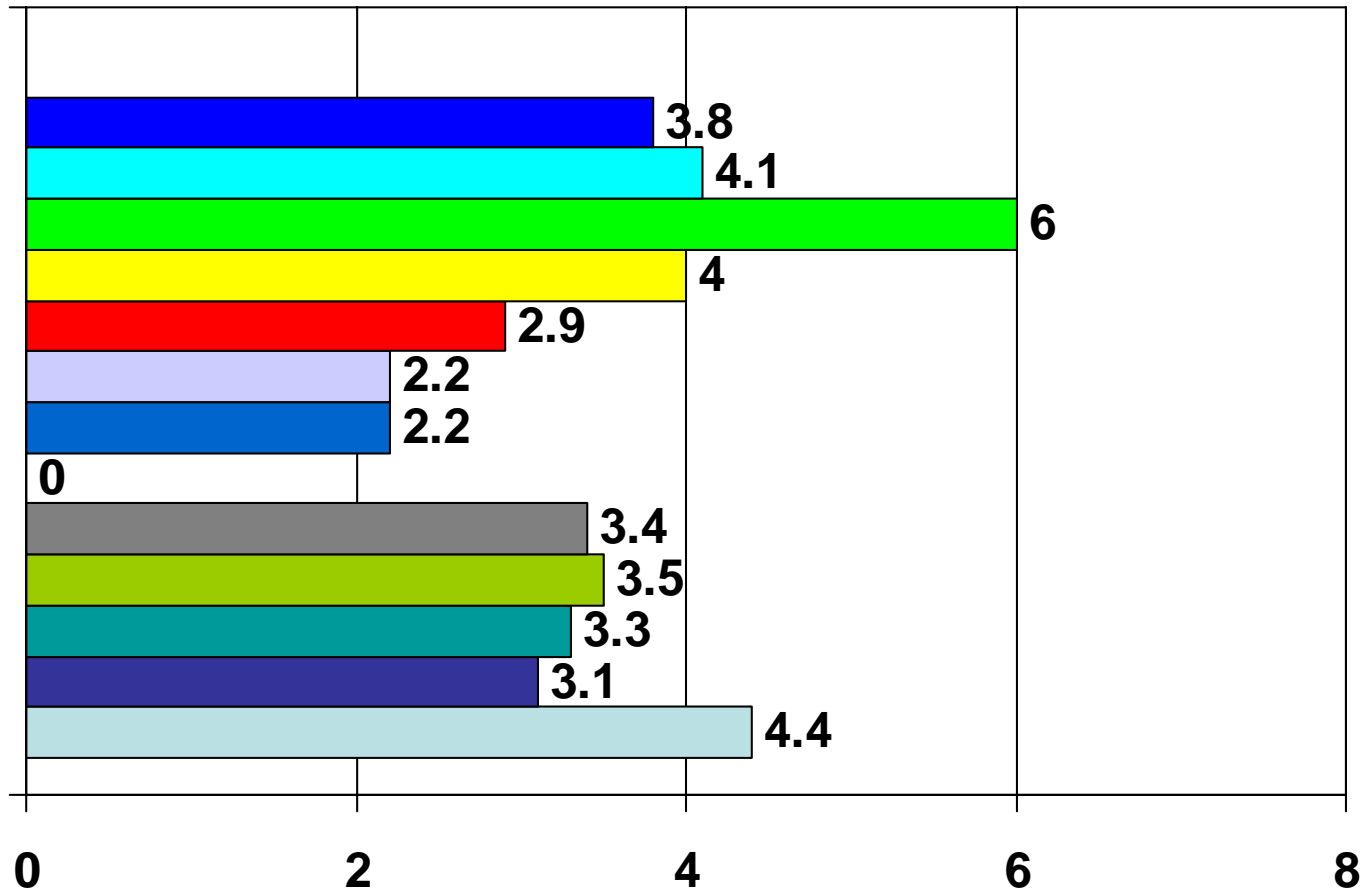
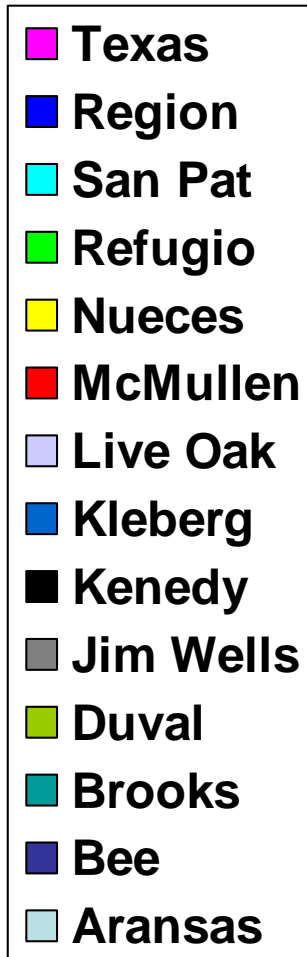
Source: U.S. Census

Confirmed Child Abuse Cases Rate Per 1,000 Children 2004



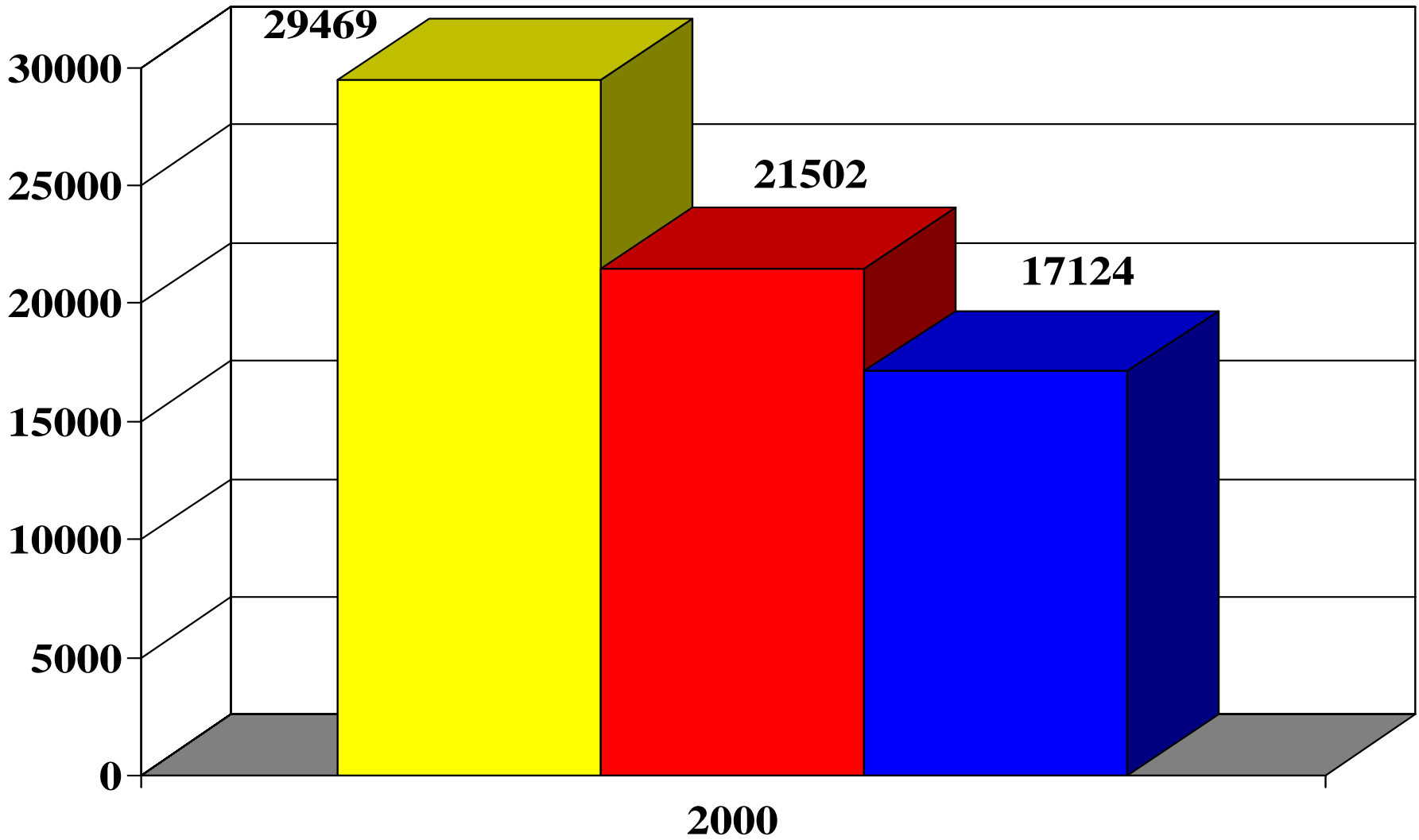
Source: Tx Dept of Protective and Family Services

Confirmed Adult Abuse Cases Rate Per 1,000 Adults 2004



Source: Tx Dept of Protective and Family Services

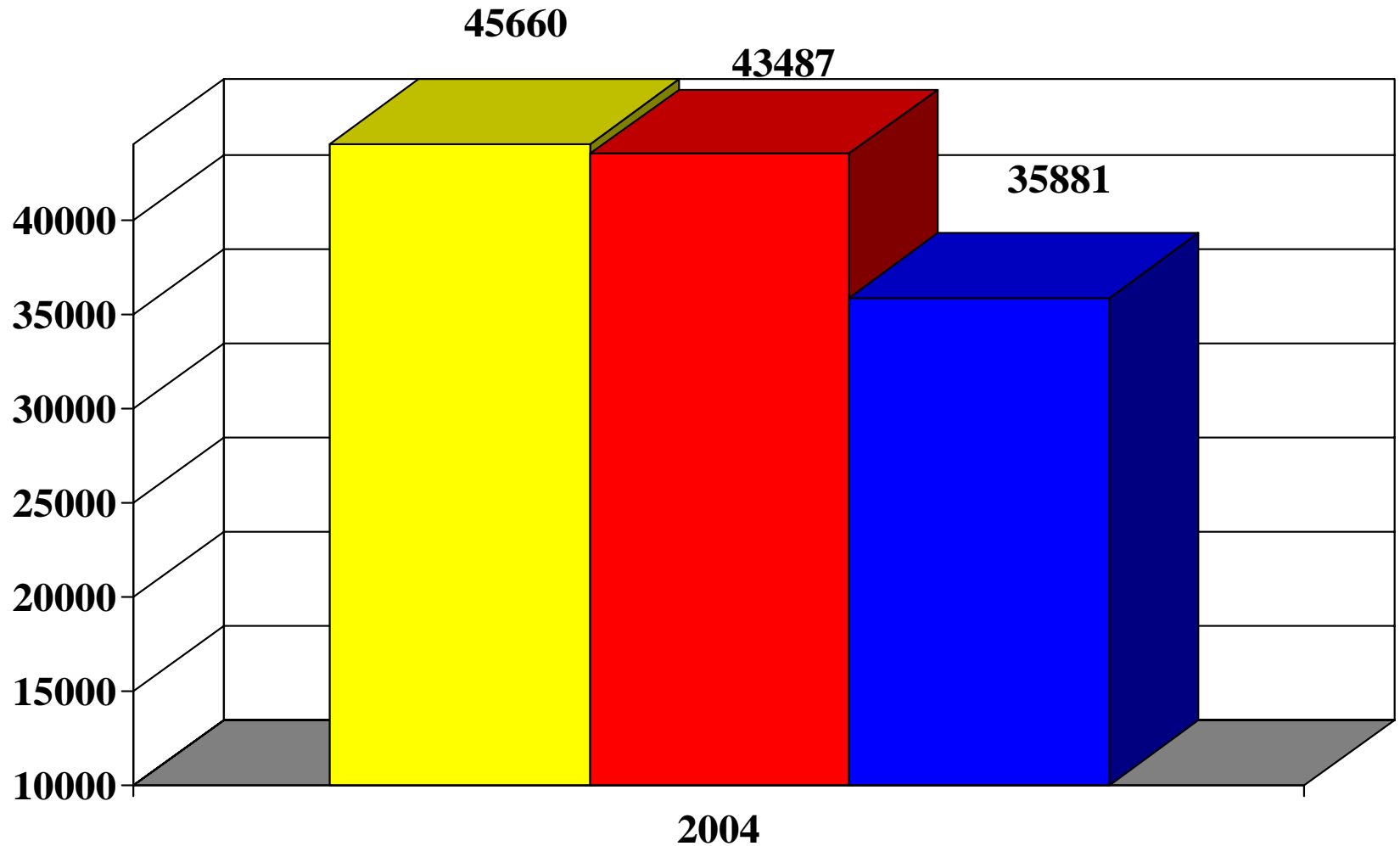
Per Capita Income 2004



■ National ■ State ■ Region

Source: Texas Workforce

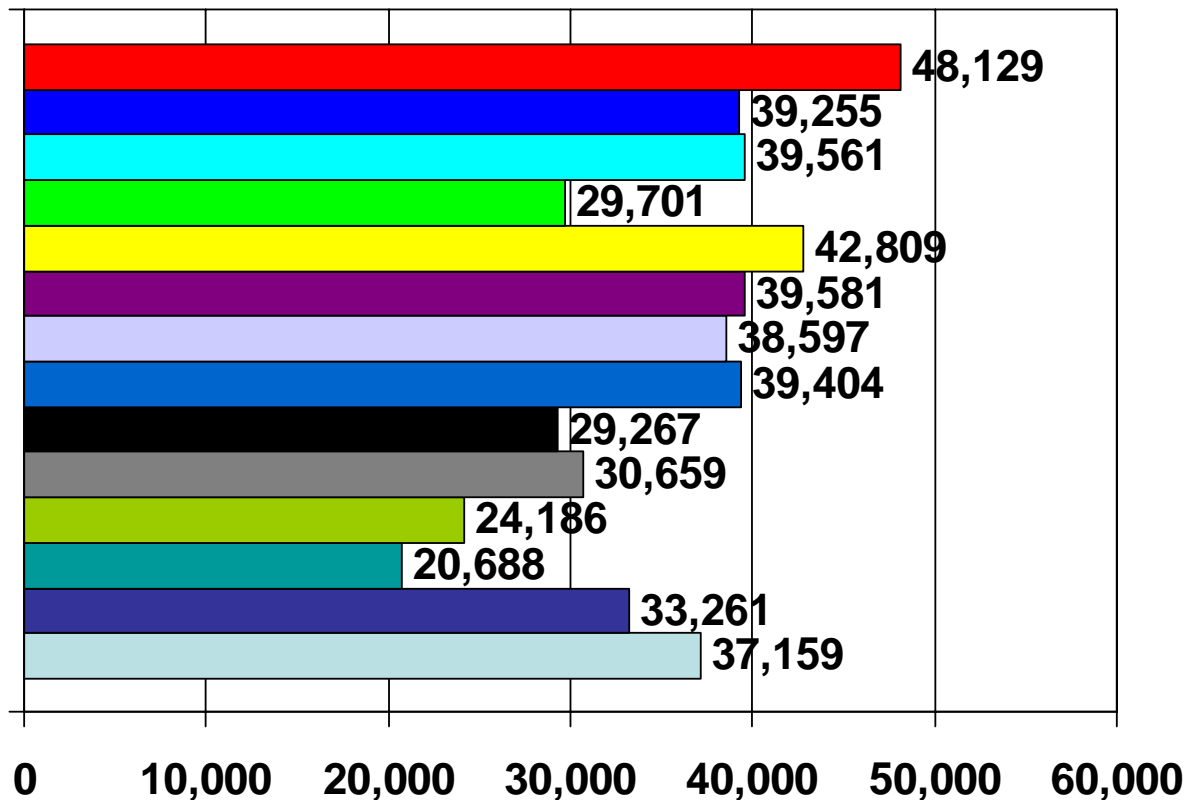
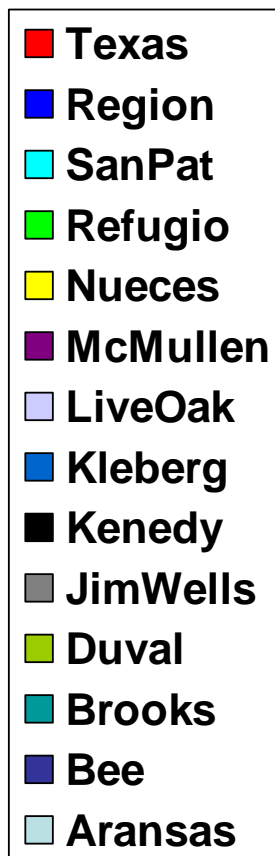
2004 Median Household Income



■ National ■ State ■ Region

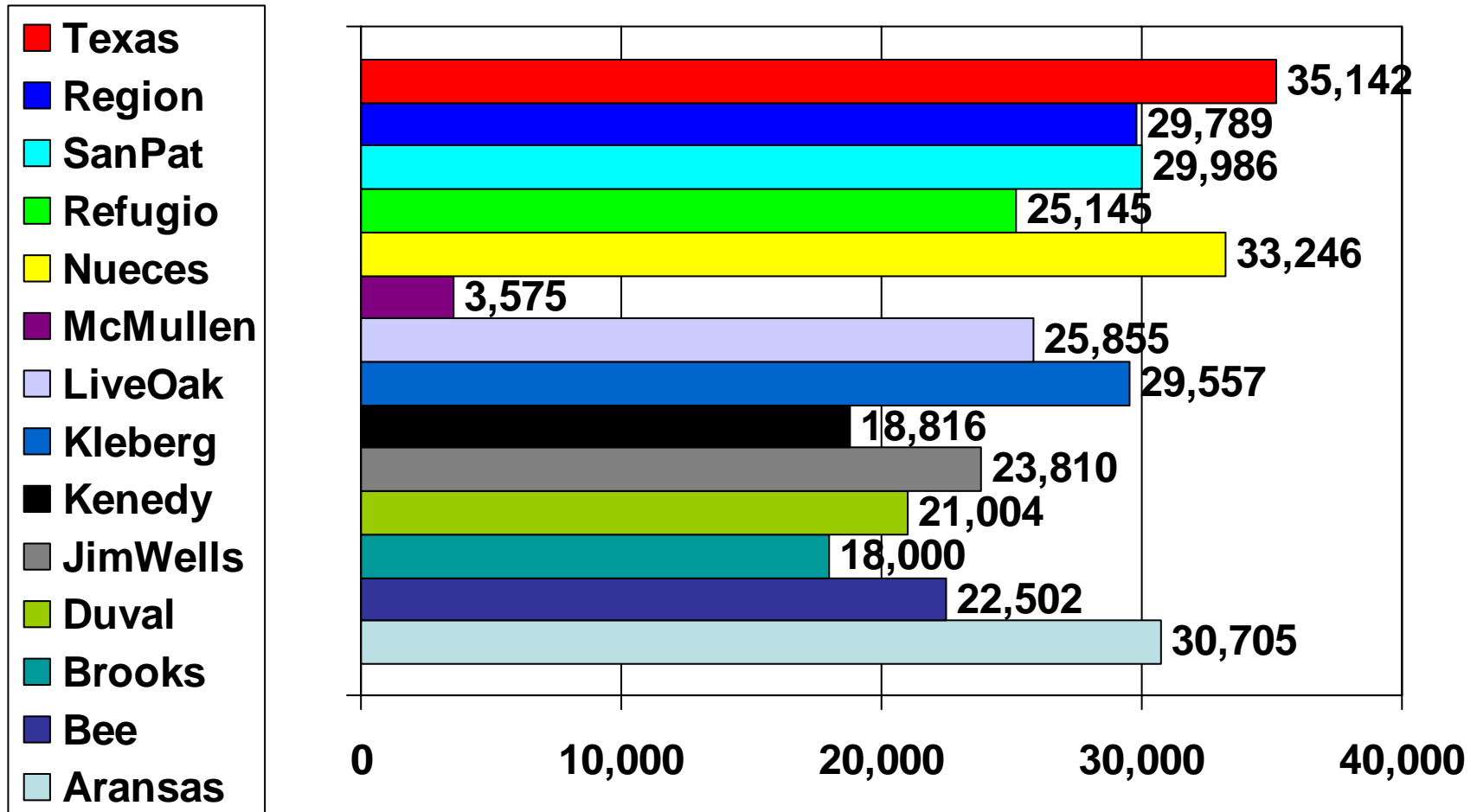
Source: U.S. Census Bureau

Median Income by Age (55-64 yrs of age) 2004



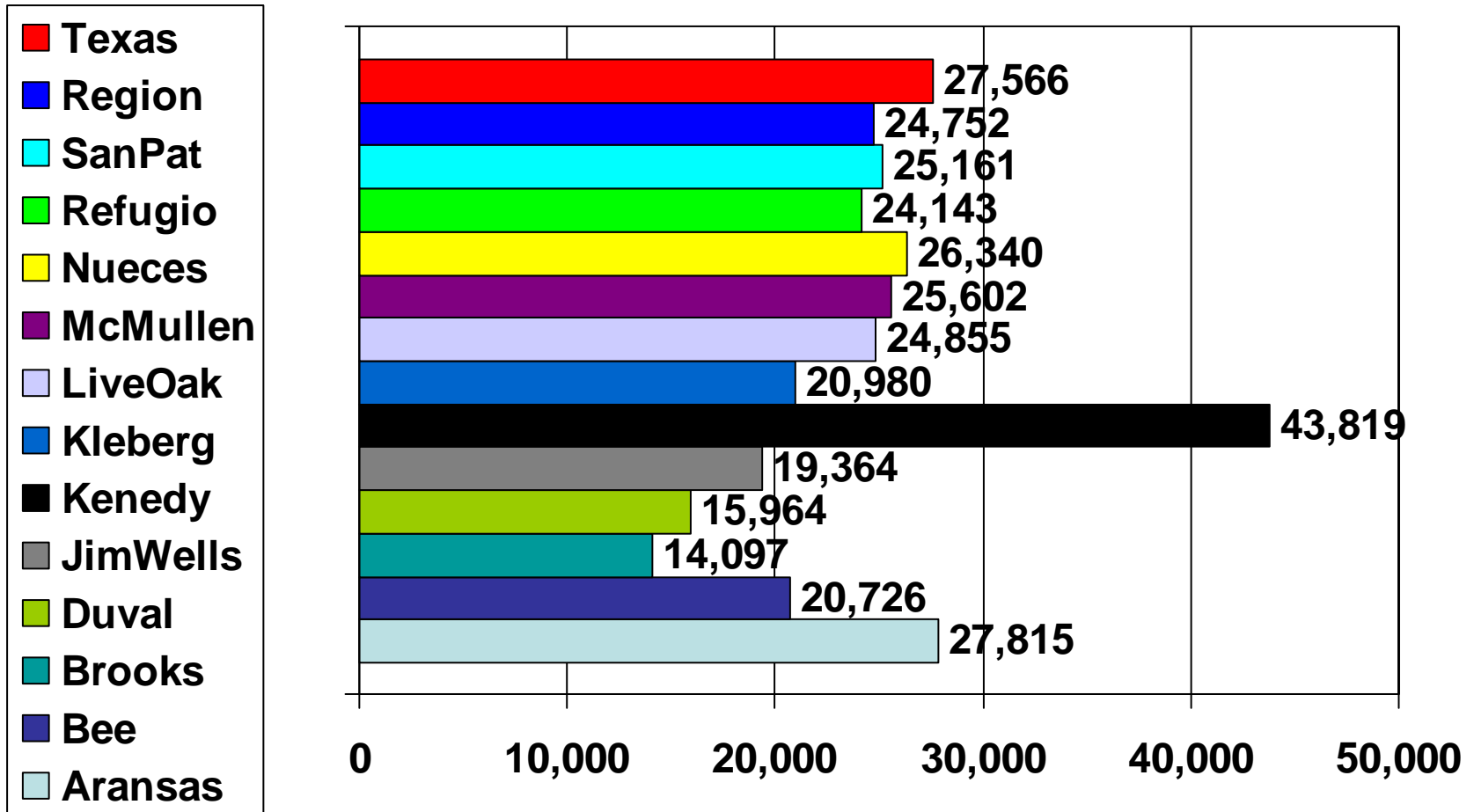
Source: Demographics Now

Median Income by Age (65-74 yrs of age) 2004



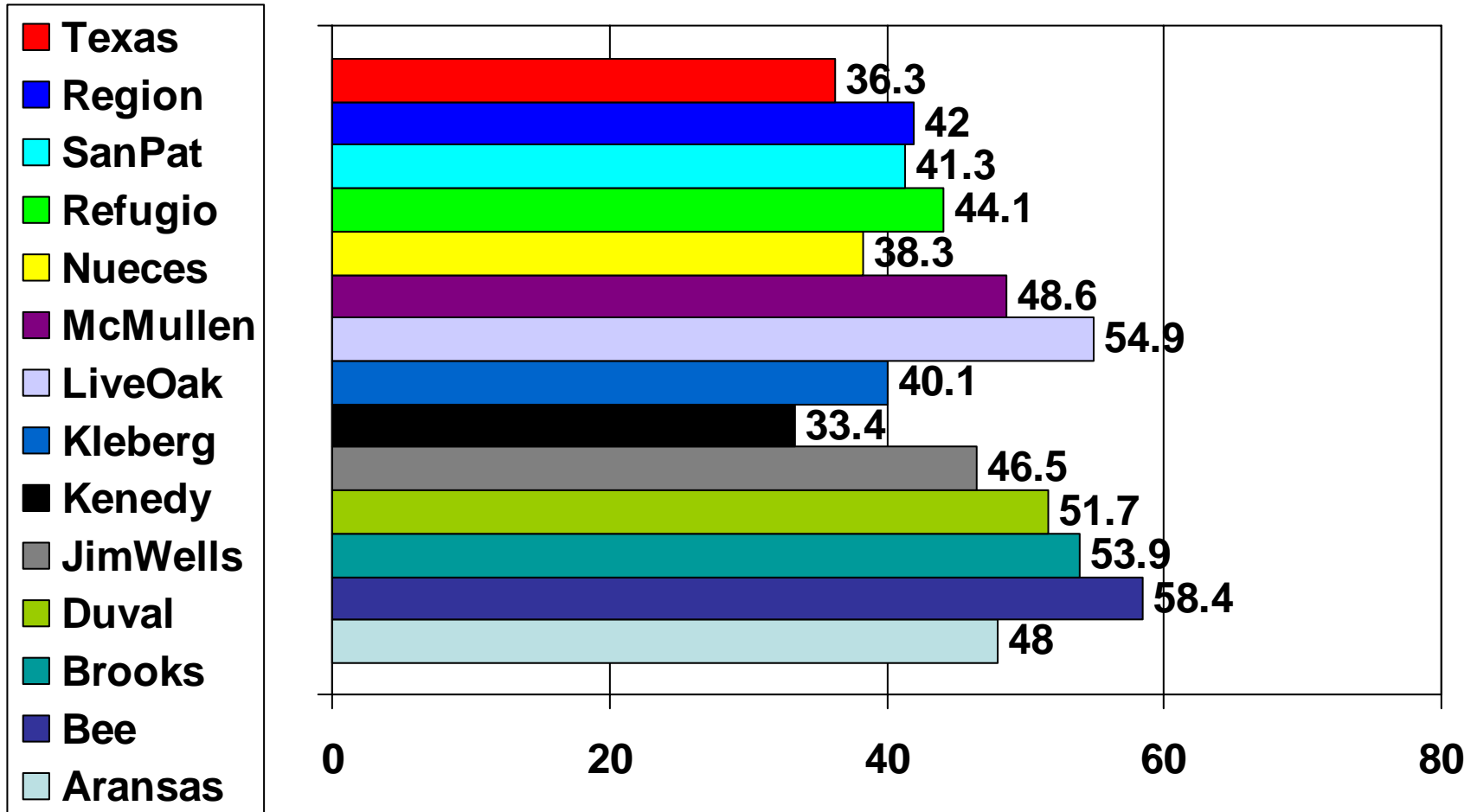
Source: Demographics Now

Median Income by Age (75+) 2004



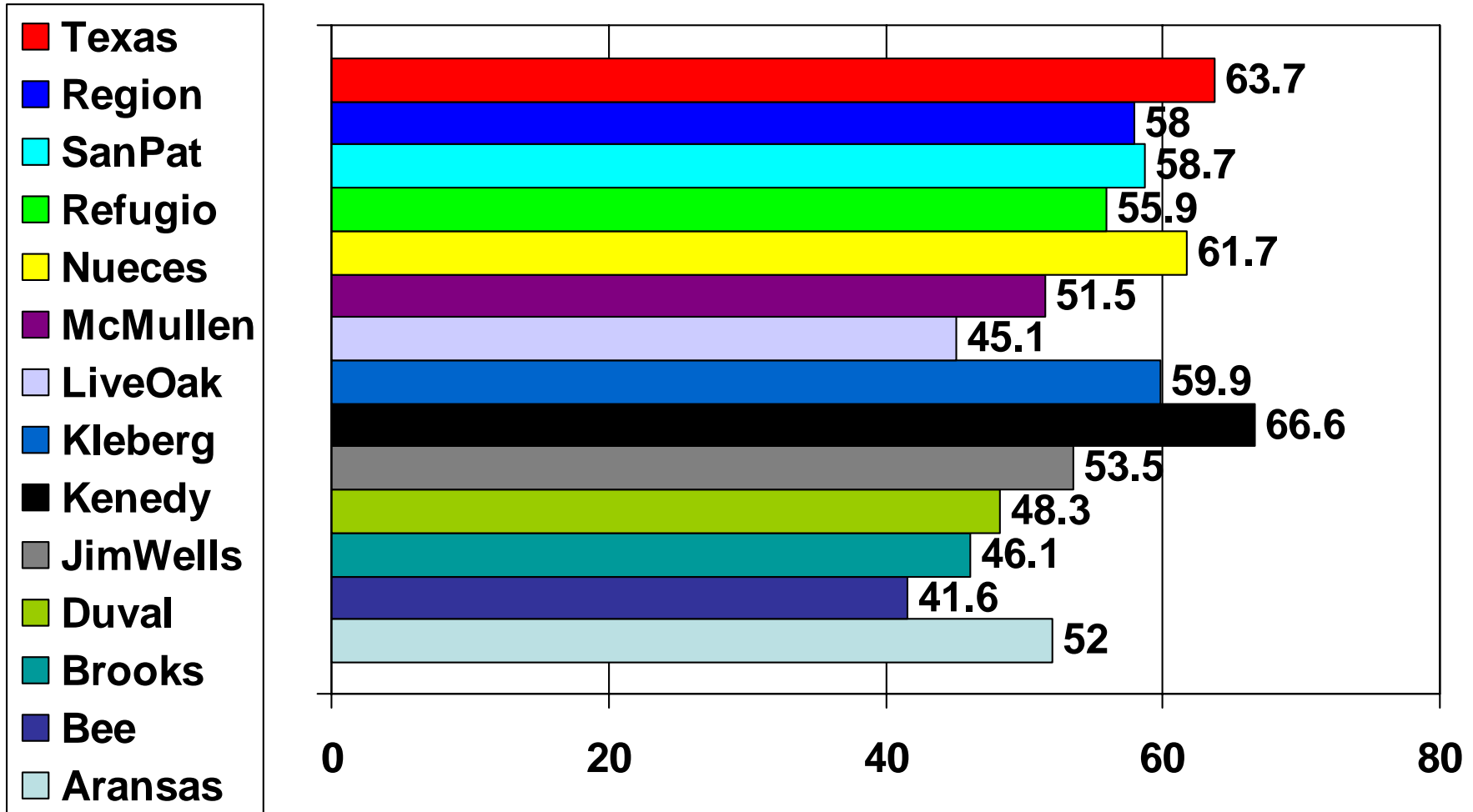
Source: Demographics Now

% Not in the Labor Force 2004



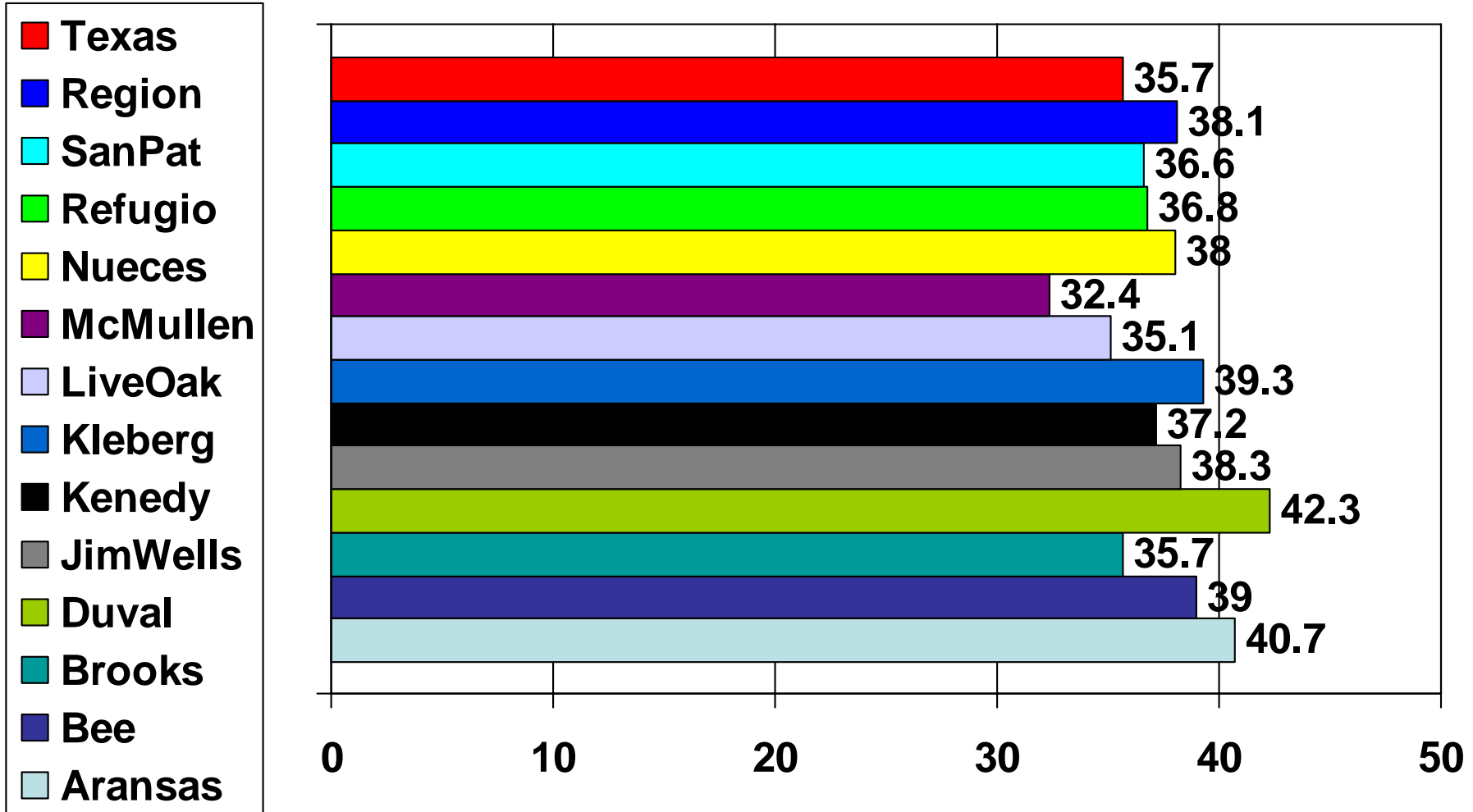
Source: Demographics Now

% In Labor Force 2004



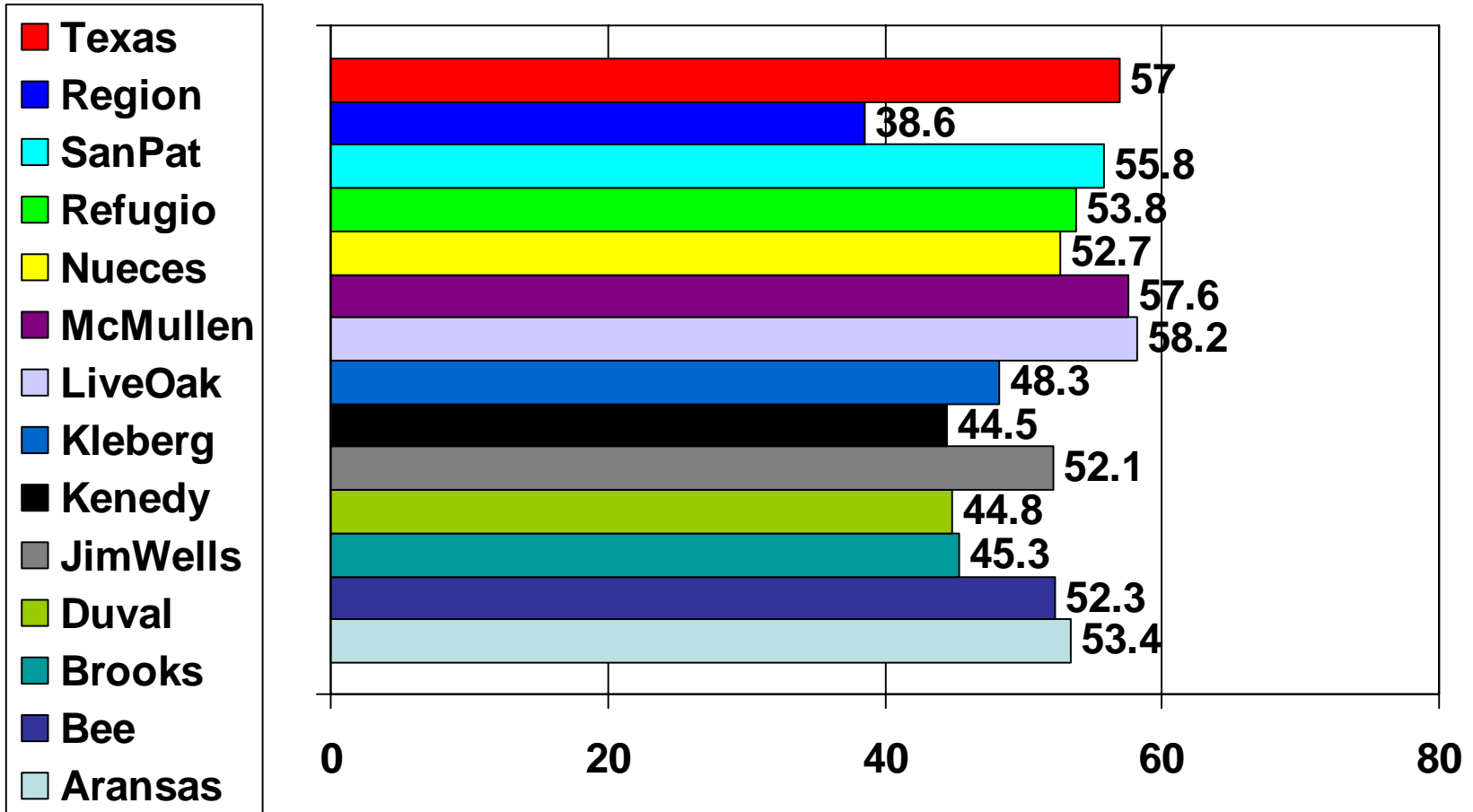
Source: Demographics Now

“1” Vehicle Available 2004



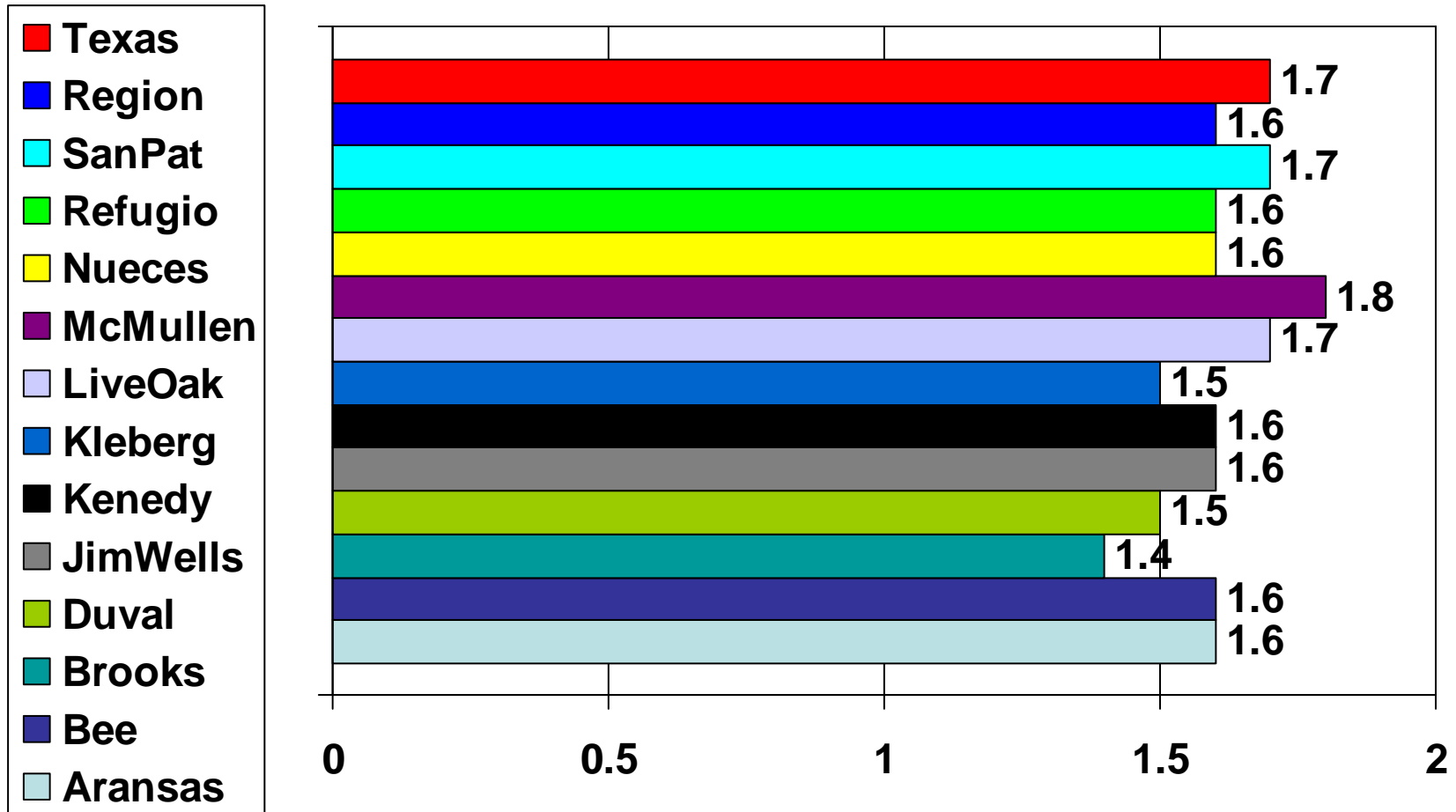
Source: Demographics Now

“2” Vehicles Available 2004



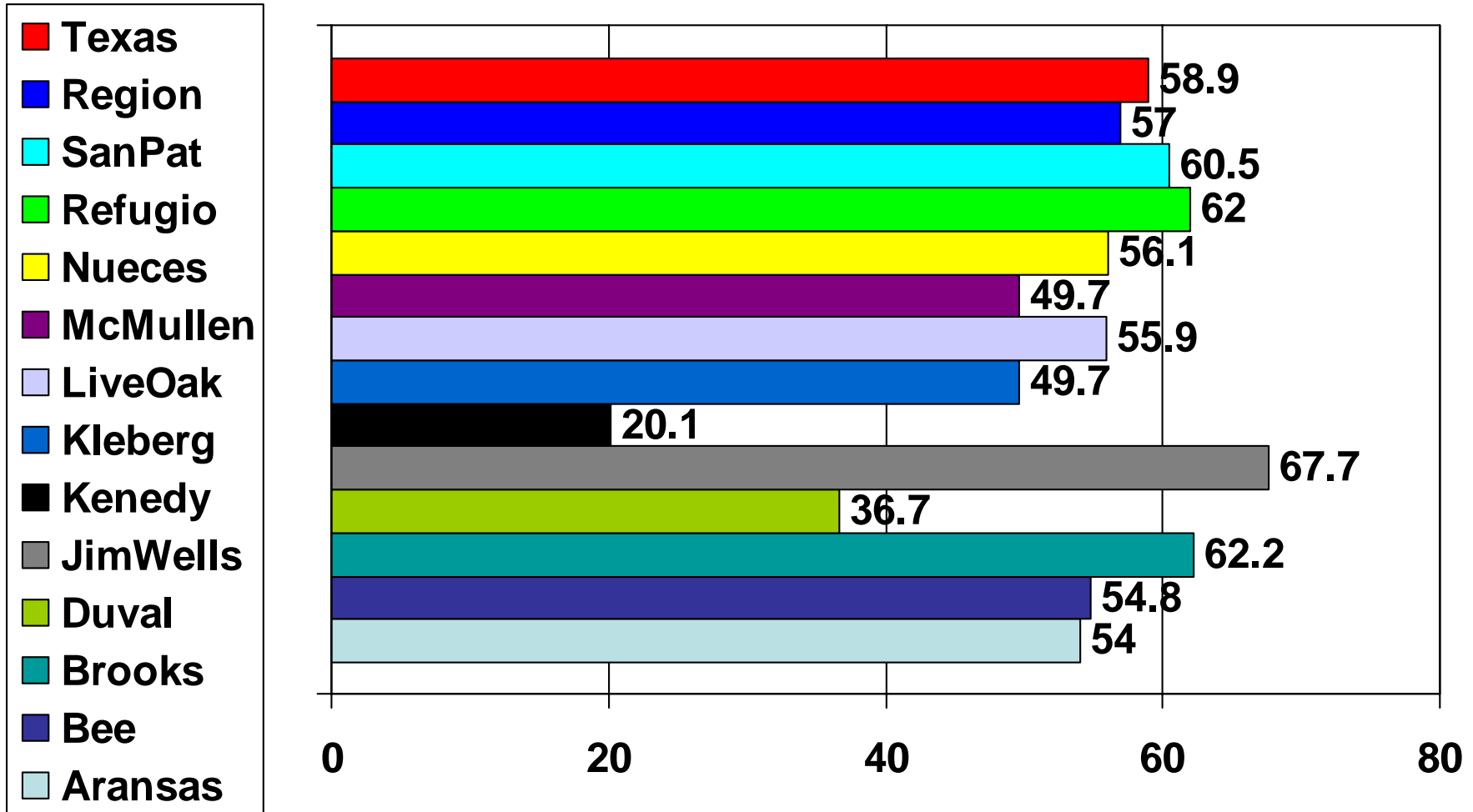
Source: Demographics Now

Average Vehicle Per Household 2004



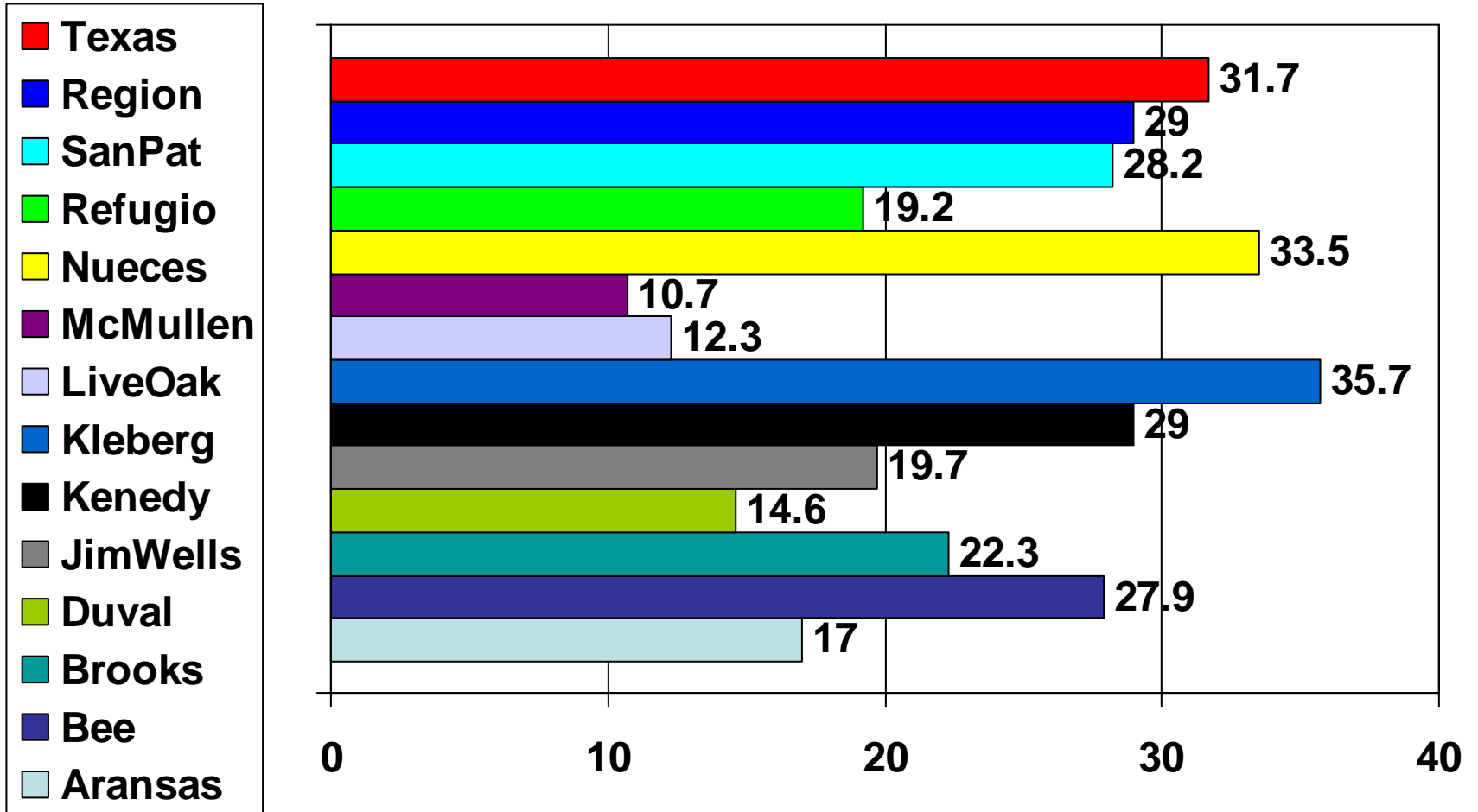
Source: Demographics Now

Housing Units Owner-Occupied 2004



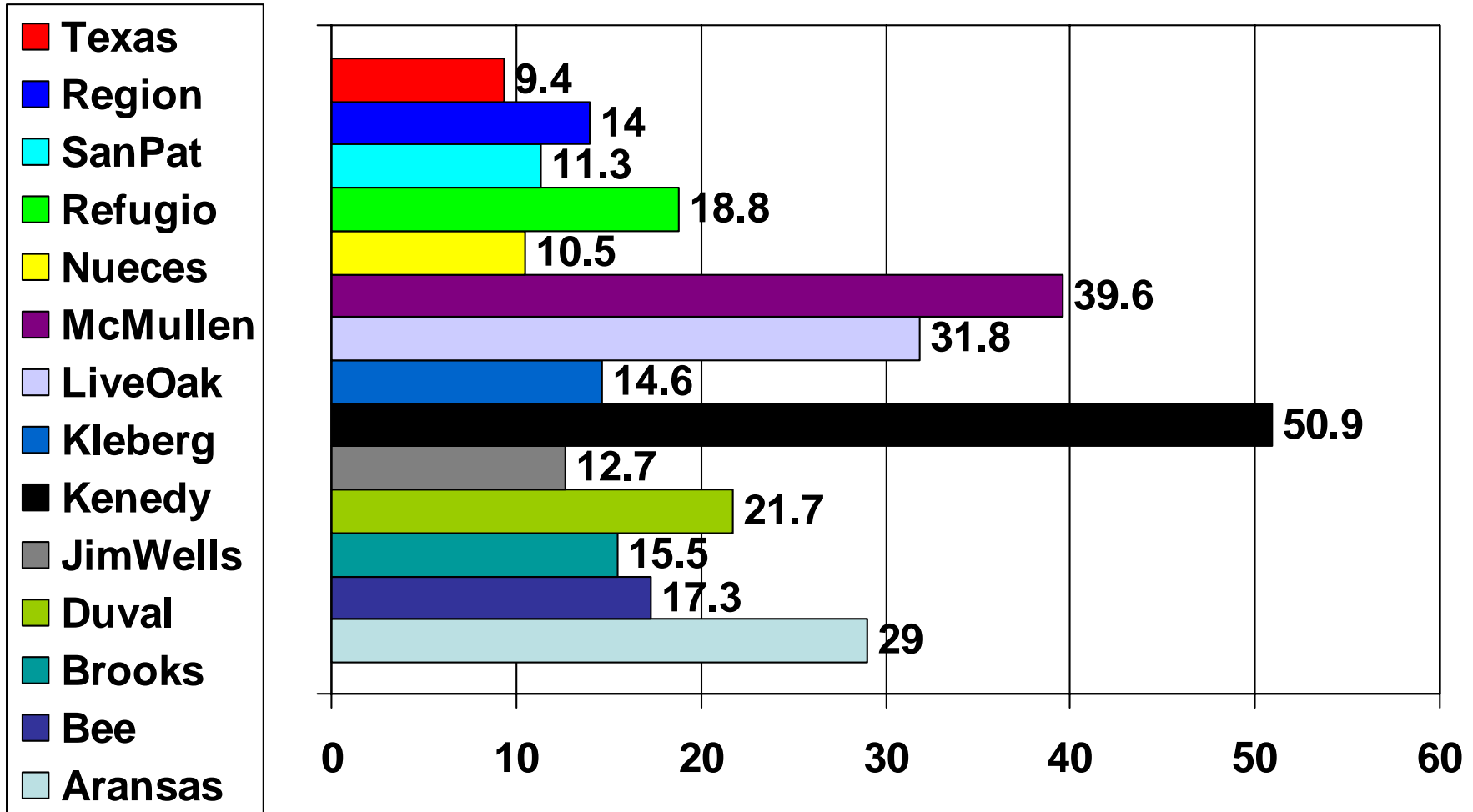
Source: Demographics Now

Housing Units Renter-Occupied 2004



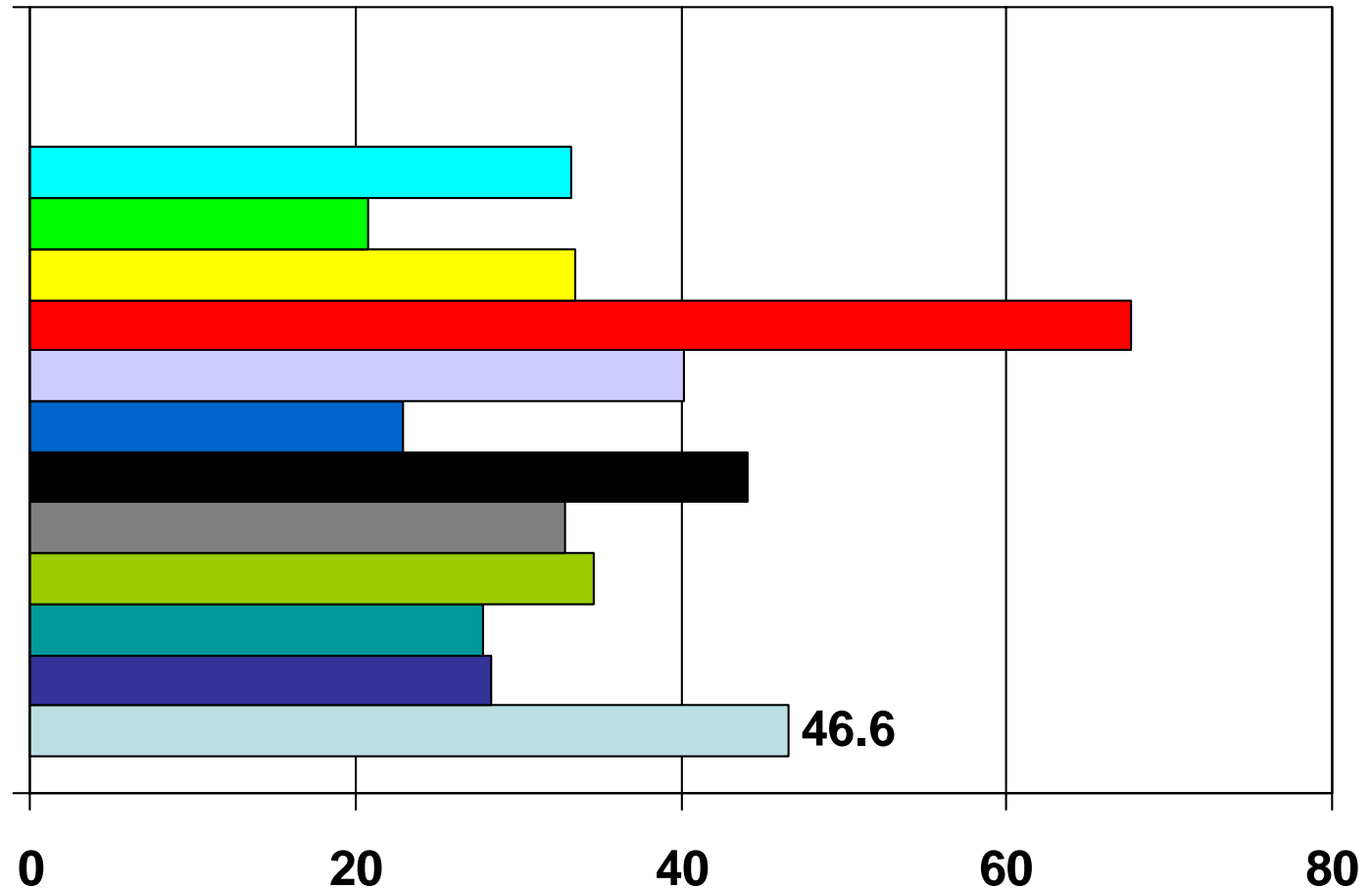
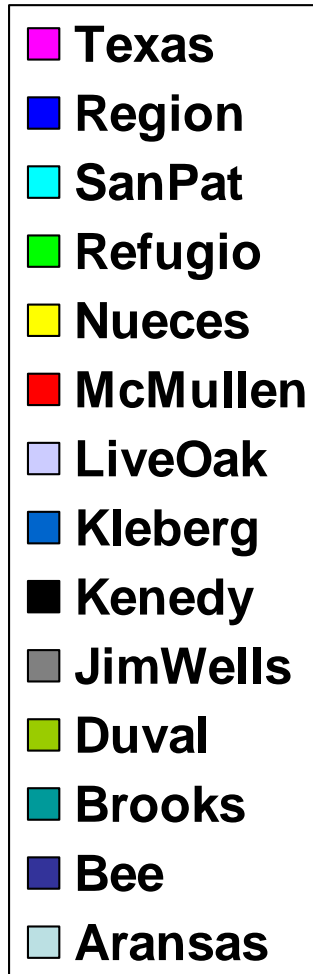
Source: Demographics Now

Housing Units Vacant % 2004



Source: Demographics Now

% of Housing Units Built in 1980 or Newer 2004



Source: Demographics Now